

April-June 2014 SRNA Newsletter

Vol 3, Issue 2

Contact: info@srnapasadena.org
On the web at www.srnapasadena.org

IN THIS ISSUE

[Fourth of July Safety](#)

[Proposed Festival Central Arroyo](#)

[San Rafael School News](#)

["Family" Feature](#)

[710 FWY/Tunnel Update](#)

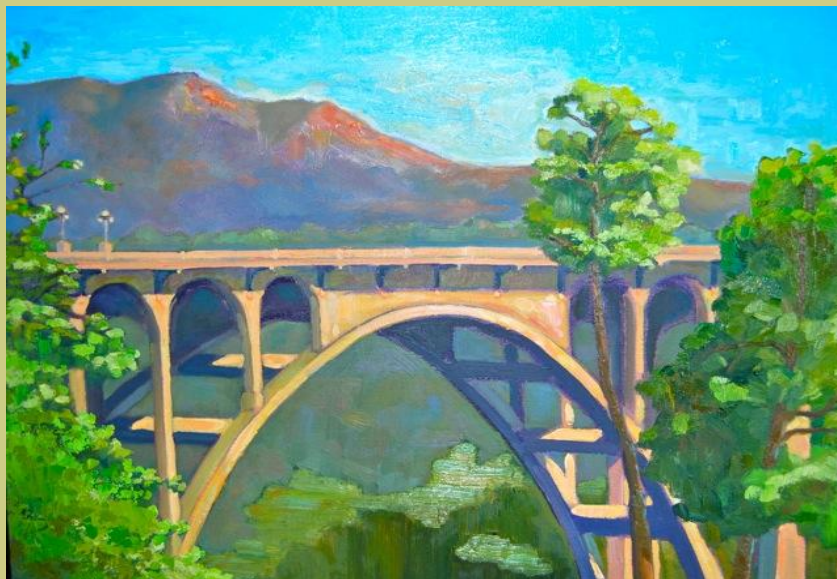
[Crime Update & News](#)

[Historical News](#)

[Neighborhood Column](#)

[RED FLAG ALERTS - NEWS!](#)

[National Night Out](#)



The beautiful artwork showcased in SRNA newsletters is that of SRNA member Wendi Moffly. SRNA is grateful for the warmth Wendi's artwork brings to our pages. In this edition of the newsletter, we are happy to display new paintings by Wendi.

SRNA 2014 Board

Mary Dee Romney-President
Robin Salzer-Vice President
Mary Beth Bridges-Vice President
Stan Clark - Treasurer
Adele Levitt-Secretary

Directors:

Robin Salzer
Mary Beth Bridges
Stan Clark
Ann Kelley
Mary Dee Romney
Freddie Hannan
Adele Levitt
Joanne Fletcher
Kathy Goodwin

SRNA Artist-Wendi Moffly

MEETING ANNOUNCEMENT

SRNA General Meetings

WHEN: FIRST WEDNESDAY EVERY MONTH

WHERE: CHURCH OF THE ANGELS
CHURCH HALL

1100 AVENUE 64
7 PM

Next General Meeting:

August 6, 2014

**No Meeting in July due to the Holiday
Happy 4th of July!**

SRNA GENERAL MEETINGS ARE OPEN TO ALL MEMBERS OF THE PUBLIC

SRNA asks everyone to keep a safe 4th of July.



Photo Courtesy of & Licensed to Stan Clark.

Pasadena Fire Department reminds residents and visitors that the best way to celebrate the Fourth of July holiday weekend with family and friends is by attending a professional fireworks show. **The sale and possession of all fireworks is illegal in Pasadena** as well as most of Los Angeles County. Violators are subject to confiscation and impound of vehicles, up to one year in jail and fines up to \$50,000.

Statistics show that nearly 10,000 fireworks-related injuries are treated in U.S. hospital emergency rooms annually. In 2009 (latest National Fire Protection Association), more than nine out of 10 (92 percent) emergency room patients with fireworks-related injuries were injured by permitted, legal fireworks. Try to remember that fireworks are a risky consumer product.

Pasadena is very dry due to lack of rain - areas are vulnerable. Parking in the hillside areas may be restricted due to weather conditions.

Call Pasadena Police at [\(626\) 744-4241](tel:626-744-4241) to report illegal fireworks.

For more information please contact the Pasadena Fire Department:

Lisa Derderian
Fire Department
www.cityofpasadena.net/Fire/
(626) 744-7276

Proposed Festival in Central Arroyo



Photo Courtesy of Stan Clark

Culture Change for the Rose Bowl

Pasadena's venerable 92-year old Rose Bowl sports stadium is side-winding into the trend of "music festivals." Decided on the merits of financial needs arising from stadium renovations, these three-day festivals are intended as "long term and stable" arrangements with music promoters, financially allowing the Rose Bowl to complete substantial renovations by 2018, as agreed in contractual arrangements with UCLA and, to build reserves for maintenance.

Changes to Central Arroyo public use and prohibitions of public use prior-to, during and following these events are expected to be radical, affecting all recreational uses, including the Aquatics Center and Kidspace Children's Museum.

At a recent impact-scoping meeting with Rose Bowl and city staff, recognition of the significant culture change to the Central Arroyo prompted a stated claim that the city now is committed to a new, full Environmental Impact Report (EIR). This commitment replaces an earlier comfort with only a "subsequent" EIR, piggy-backed onto impact findings related to a NFL presence.

For consideration over the next few weeks:

1. Because the Rose Bowl now is committed to hosting long-term, displacement-level

"trending events" to generate revenue, City Council must establish non-negotiable standards related to: total number of booked weekend events during summer months, ingress/egress to the Central Arroyo/Rose Bowl, securing Central Arroyo boundaries, check-points, parking/drop-off/shuttle service routes, hours of operation for all services, maximum attendance, food and drink restrictions, overhead helicopter traffic, numbers of police and security, medical personnel and law enforcement methods to discourage criminal behavior.

2. City council is on record assuring these festivals will be "family events," yet equivalent events show significant drug use and related behavior incompatible with the assurances. The A-to-Z spectrum of music festivals affords few models considered "family events." Will the Rose Bowl festival resemble Outside Lands in San Francisco? Coachella in Indio? Tanglewood in Massachusetts? How will Pasadena be different? Pasadena residents are entitled to specifics. Upon adopting a model, City Council must identify impacts and fund mitigation.
3. There must be public clarity on who runs the events, their liability and signature agreement to local standards for the Central Arroyo. Early plans call for main-stage performances inside the stadium. Satellite stage performances will be on the golf course, synchronized with the main stage yet displacing parking and expanding the event beyond the golf course. Terms and conditions for this "expansion" have yet to be identified. There has been no public discussion of restaurant facilities, food trucks, etc. Camping in the Central Arroyo, as experienced with the Coachella festival, reportedly will be prohibited.
4. Expect City Council to favor "passing the buck" to the Rose Bowl Operating Company (RBOC) to grant exemptions to city ordinances governing noise levels, intrusions of lighting and operating hours. The duration of these waivers, in terms of hours, must be set by City Council. It has been determined that First Amendment protections will be upheld for performers amplifying lyrics found unacceptable by neighboring families with children.
5. The stock-and-trade of competent music promotion is CONTRACTS. The City of Pasadena, with well-known financial needs at the Rose Bowl, will be disadvantaged from the start in contract negotiations with music promoters. Who, at City Hall, will read every line of these contracts and comment back to City Council and the public prior to signature?

SRNA will continue to participate in the RBOC-Neighborhood process designed to address these issues. Updates to neighbors will be ongoing.

San Rafael Elementary School

Having conducted eight public meetings over a period of five months, the San Rafael Elementary School 7-11 Committee submitted its final report to the PUSD Board of Education Thursday evening, June 26th.

Mandated by the Board of Education to determine community "limits of tolerance" for alternative uses for the school site to be vacated in 2017 due to earthquake faults, the committee, despite staff/attorney admonitions for exceeding its scope of duty, nonetheless chose to exceed its scope of duty.

With the submission of its report, the Committee now is de-commissioned leaving neighbors to work with the Board of Education on the "limits of tolerance" for future use of the site.

Below are courses of action considered viable by the 7-11 Committee. In all cases the Committee had neither official mandate, technical expertise nor fiduciary authority to attempt analysis.

1. The SRES site will be trenched to follow four already-tested fault lines to provide 100% proof of seismic conditions at the site. (see photos below)
2. SRES buildings (including the historic brick main structure) will be cut and moved to surface areas between the four fault lines on the 3.2-acre site.
3. The southwest lower corner of the SRES site will be seismically tested for construction of a new, 3-story building.
4. Site placement of buildings to skirt fault lines while housing the needed critical mass of students may require additional property on Nithsdale.

The Board of Education must grapple with the above while considering the District's current factual and fiscal imperatives along with neighbor surveys.

Recent data developed with Davis Demographics as discussed by the Board of Education Boundary and Master Plan Committee shows a 23% loss in District enrollment (5,187 students) over the last ten years (2003-4 to 2013-14) with five elementary schools under-enrolled (Altadena, Cleveland, Franklin, Jackson, Roosevelt).

The District's updated 2013-14 data on facilities shows a capacity for 29,226 students and enrollment of 16,900 (10/02/13), an excess capacity of 42.2%.

Under these circumstances, the Board of Education is hard-pressed to justify allocation of capital funds for construction of new elementary school classrooms, particularly since facility needs at other sites have not been funded.

Further, due to unfunded actuarial obligations to teacher benefits, the Governor's recent budget calls for stepped increases in District/employer contributions to CalSTRS (8.25%, 2013-14 to 19.10%, 2020-21). The District presently is analyzing options to forestall deficit spending in future budgets in order to make these contributions.

The stated mission of the San Rafael Neighborhoods Association (SRNA) is "to enhance and maintain the character and quality of all San Rafael neighborhoods through advocacy and an activated community."

SRNA welcomes the opportunity of working with the Board of Education, District staff and neighbors through the transitional stages scheduled for the San Rafael Elementary School site.



Photos courtesy of GEO-TECH - Presentation on Trenching to the Committee

To view the Final Report to the Pasadena Unified School District Board of Education:

http://pusd.granicus.com/MetaViewer.php?view_id=12&event_id=215&meta_id=80191

To view the 4th Geological Survey completed on San Rafael Elementary

[SRES Geological Survey #4](#)



Family Out For a Stroll



Photo courtesy of Bruce Dern

The San Rafael neighborhoods are home to many creatures, from bobcats, skunks, possums,

squirrels, deer, raccoons, coyotes, etc., and a range of birds. Here is a family of Canadian geese with their baby chicks out for a stroll on San Miguel Road next to San Rafael Elementary School. "Stay together kids we'll be at Johnston Lake in a few minutes!"

710 Extension/Tunnel Update

By Ann Kelley



Photo licensed to and courtesy of Stan Clark

No 710 Group Shows up to Oppose Alhambra

On Tuesday, June 3rd at 11:00 a.m., several No 710 advocates gathered at Gateway Plaza Park on the corner of Fremont & Valley Blvd. to show opposition to Alhambra's "Banner Dedication Ceremony." While Barbara Messina and Alhambra's Mayor spoke to 30-40 paid city employees who gathered, the No 710 attendees marched in protest to the whole event. Our eldest attendee was 85 years old and a resident of Alhambra. You can still get your RED No710 shirt. Contact by email No710store@gmail.com or call 626-354-4340.

Join us at the South Pasadena 4th of July Parade

Friday July 4th, from 10:00 am to noon

This year we must show that opposition to the 710 extension has grown throughout the region. We want everyone from the various communities to join us in the parade. Plan to join the marchers. Bring your friends and family (children too!). You can walk or ride your bicycles, scooters and skateboards. Props will be provided. We had 150 people marching last year and hope to get 200 this year! Meet us at Hope St. and Meridian Ave. No 710 t-shirts are available at email No710store@gmail.com or call 626-354-4340.

Alhambra's Upcoming "Close the Gap" Event

Responsible Alhambrans Against the 710 would like to invite you and your friends to attend the City of Alhambra's "Close the Gap" event.

Thursday July 10, from 4-7pm



Picture from last year's event courtesy of Joe Cano

Wear your **No 710 t-shirts or a red shirt**. No 710 buttons will be available if you don't have one. You can park at Kohls on the corner of Fremont and Mission or at CVS on the corner of Valley and Fremont. Consider taking Marengo down to Valley and then turning west on Valley or Mission, rather than taking Fremont. Meet at the Alhambra Arch located at northwest corner of Valley and Fremont. We were there last year and talked to a number of Alhambra residents who had no idea the tunnel is expected to be a toll road. Let's come out in large numbers. The city of Alhambra will close off Fremont between Valley and Mission at the height of rush hour (to annoy the drivers). Last year, the city provided blue "Close the Gap" t-shirts to city employees who attended.

Please RSVP so we know you're coming @ Alhambrans_Against_710@yahoo.com They really need our support! July 4th march in South Pasadena. Lets make this year's event bigger!

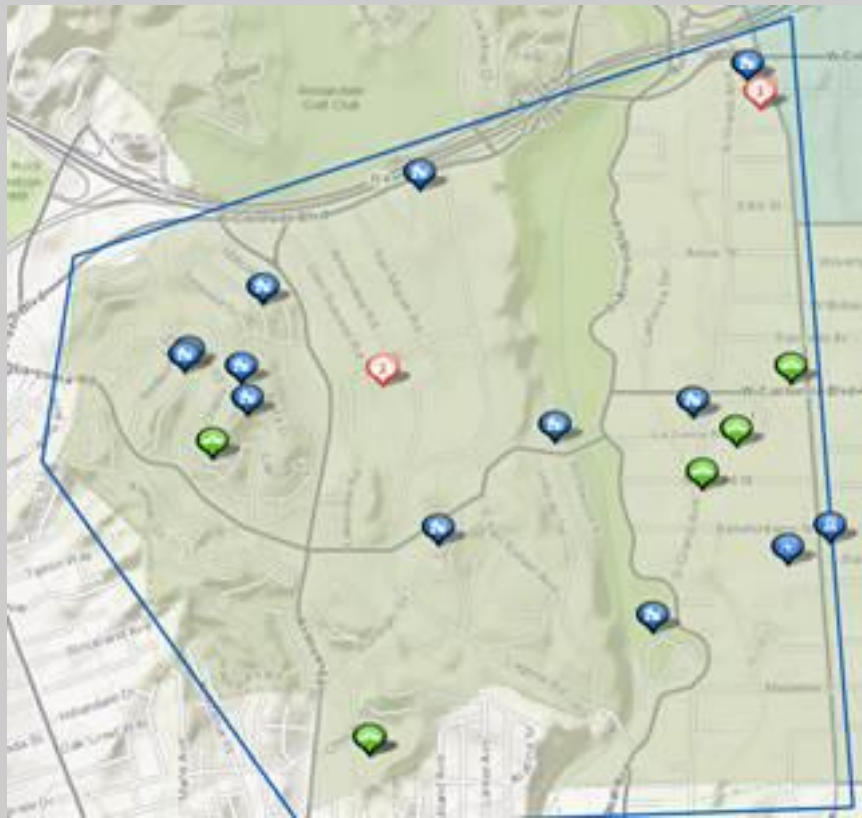
Crime Update & News

SAN RAFAEL CRIME ON THE INCREASE

"Crime has seen an uptick recently," stated Pasadena Police Chief Phillip Sanchez. The Chief reminds us to be vigilant and if you see something - say something. If you notice anything odd or out of the ordinary please call the Pasadena Police Department non-emergency number at 626-744-4241. Residents can also call on the Anonymous Tip Line at 800-222-8477. For emergencies dial 9-1-1.

Below is a map of recent crime in SRNA's area and the East side of the Arroyo. Please share this information with your Neighborhood Watch.

Time Period: Since January 1, 2014



4	BURGLARY - ALL OTHER
2	BURGLARY - COMMERCIAL
11	BURGLARY - RESIDENTIAL
8	LARCENY - FROM VEHICLE

Data Provided courtesy of the Pasadena Police Department

The Pasadena Police Department provides these tips for safety. Please take a moment to read them and if you have any questions please contact the Community Services Section at:

626-744-4550

- Install an alarm and use it while away.
- Lock all doors and windows when not at home.
- Use locks with anti-saw pins and solid exterior core doors.
- Install peepholes to view persons on the other side.
- Use sliding bars and other locks on windows.
- Keep valuables in a safe not easily located.
- Use exterior lighting to illuminate areas.
- Trim landscaping around windows and doors so they are not concealed.
- Consider leaving a radio or TV on while away.
- Don't leave valuables in your cars.

*** If on vacation, ask a neighbor to park their car in your driveway. Stop newspaper and mail service or ask a neighbor to collect them.

Residents can also sign up for NIXLE. NIXLE is an alert system that the Pasadena Police Department and several other agencies use to notify you via phone regarding important safety information. The service is free and works with cell phones and e-mail.

Local Historical News

By Cecily L. Betz

Henry's Rite Spot - A Legacy of Hospitality and Lost Architectural Landmark Henry's Rite Spot once located at 1500 Colorado Blvd at the corner of Avenue 64 was demolished in 1972 and replaced by the Los Angeles Fireman's Credit Union.

Sadly, that restaurant in today's environment would likely not have been destroyed. It would have been considered an architectural landmark as it was designed by John Lautner, a prominent architect whose work posthumously has gained growing recognition. The location of Henry's Rite Spot has a long and interesting history reflective of the growth of this area itself. The history of the development of that site mirrors the history and development of commerce, culture and community in the post-war era of World Wars I and II, the economic boon of the post-war era and the era of change during the 1960s and 1970s.

The Rite Spot, so named by transplanted San Diegans H.S. Sternberger and his two sons was originally begun as a fruit stand in 1916 to attract drivers travelling along the yet to be paved Route 66. According to historical accounts, the dusty and bumpy route was challenging for the early vehicles of the day. Getting up the hill from the Eagle Rock to Pasadena and beyond created enormous strain on the automobiles resulting in their "heating up." Naturally, owners would have to pull off the road to cool off their cars. The Rite Spot, aptly named by the Sternbergers was the obvious location for drivers to cool down their vehicles and at the same time purchase produce at the fruit stand. This shrewd business decision led to expanding the fruit stand to include other convenience products such as hot and cold sandwiches, fruit juices and soda. As one historian noted, the Rite Spot family business was an early prototype of a fast-food restaurant.

After the death of Sternberger's father, his son Lionel eventually purchased the property. Lionel expanded the business into a restaurant, with a menu of a large array of dishes. So, with the early forerunner of the original Rite Spot fruit stand, it made economic sense to build a restaurant that was conveniently located in the city limits of both Pasadena and Eagle Rock, especially in view of the fact that Route 66 was now a paved road, making it a more convenient location for customers.

As legend has it, Lionel Sternberger claims to have created the first cheeseburger. Again, according to the Rite Spot oral tradition, Lionel's creation of the cheeseburger was inspired by a customer request to have cheese with the burger. The cheeseburger became a featured item on the menu. The Rite Spot was eventually sold to the Henry's Restaurant chain, located in Southern California. There were four Henry's Restaurants- Henry's of Alhambra, Henry's of Glendale, Henry's Famous Rite Spot, and Carpenter's in Arcadia. This chain of restaurants was so named after one of the founding partners, Henry Carpenter. The restaurant in Arcadia was named Carpenters after the family's surname.

The Pasadena Henry's restaurant incorporated the Rite Spot into its name given its high profile of recognition in the community. Glen K. Amundson, who eventually became one of the partners and CEO of this chain established the Henry's menu in 1936. As noted in the 1976 La Canada Ledger the Henry restaurants were "...famous for its economical, family style steak, seafood, salad and dessert menu." The Henry Restaurants, including the Pasadena Rite Spot, featured drive-in service, restaurant dining and a cocktail lounge. Breakfast, lunch and dinner were served

at several of the restaurants.

One of the signature dishes served at these eating places, including the Rite Spot was a trademark dish called, Chicken in the Rough™. This particular dish was created by Beverly and Rubye Osborne of Oklahoma in 1936. He franchised this meal and sold more than 250 franchises world-wide to restaurants who began serving dish. This plate included ½ fried chicken and French fries served with hot butter rolls and honey. A Chicken in the Rough™ ad found in a North Carolina newspaper, The New World, proudly asserts that chicken is served with "... gobs of shoestring potatoes, jug of honey and hot butter rolls...a treat unequalled!" Envision a large piece of chicken surrounded on all sides by French fries and you have Chicken in the Rough! It has been referred to as the early forerunner of later franchises to follow such as Kentucky Fried Chicken. Icons of the Chicken in the Rough can still be found when googled, depicting a chicken wearing the old fashion golf pants with a broken golf club with the golf ball in the rough. Apparently this sign was the insignia that this chicken dish was available at the restaurant.

The Rite Spot featured a diverse selection of dishes including club sandwiches, chef's salad, stuffed tomato with chicken salad, chicken fried steak, hamburgers and steak. A bakery was maintained on the Glendale Henry site wherein two sisters baked 100 pies daily which were distributed to the other Henry restaurants. Homemade pies were a dessert favorite with patrons.

Monday nights at the Rite Spot featured a "Dollar Chicken Night" which attracted the local residents, and as a family member of the ownership observed, after eating their meals, were "...often ordering basket after basket of biscuits to fill their pockets and purses with." Notable personalities who ate meals there were Ben Alexander, the actor who was Jack Webb's partner, Officer Jack Smith in the TV series Dragnet and later Sergeant Dan Briggs in Felony Squad on ABC as well as the evangelist, Billy Graham who hosted a crusade nearby.

In the 1970s, Glen Amundson headed this franchise of Henry Restaurants as the last remaining partner. He sold it to younger restaurateurs, who closed the Rite Spot and established the Nightwatch which closed a few years later.

The Rite Spot and other Henry restaurants were designed by John Edward Lautner, who was considered to be an architect of significant prominence. His architectural projects, commercial properties and homes have been described as combining "progress engineering with humane design and dramatic space-age flair." Lautner studied under Frank Lloyd Wright and served as an apprentice at the Wright studios at Taliesin, Wisconsin and Arizona. After Lautner finished his apprenticeship with Wright, he moved to Los Angeles with his wife and daughter to establish his own architectural firm; however, he continued to work with Frank Lloyd Wright on eleven more projects in Southern California. Lautner designed more than 200 commercial buildings and homes, primarily in Southern California.

Of particular relevance, the Henry restaurants in Glendale, Pasadena and Pomona were designed by Lautner in a style referred to "Googie." This derisive term was first coined by Douglas Haskell of House and Home in 1952, which reflected the opinion of the architectural community of the time. Later, however, his talent and creativity in architectural design received the recognition due to an innovator in his field. More recently, the Googie style has been referred to as "the modern aesthetic of the coffee shop/drive in." Another writer, commenting on the Glendale Henry's restaurant said: "Every corner, every inch was engineered into functional use...the result was, to put it mildly, a masterpiece of modernity." Restaurants of this style were unusual as they featured glass walls, vaulted ceilings and exposed beams.

According to an art historian, Lautner's style of the drive in restaurant served as the inspiration for the "car café" scene in Quentin Tarantino's Pulp Fiction. Since his death Lautner's work has been recognized for its important architectural contribution. In 2006 the Hammer Museum hosted a retrospective exhibition of his work.

Sadly the restaurants designed by Lautner no longer exist. Pomona restaurant was demolished in 1987, the Rite Spot in 1979 and Glendale in 1980.

My thanks and appreciation to Dr. Jon Amundson and Jane Amundson Dierenfield, Glen Amundson's children who provided valuable input, material resources, and archival material for the Rite Spot history.

References:

Drive-In Restaurant and Highway Café Magazine (1949). Efficiency Keynoted at Henry's Drive-In.

Joe Piasecki, Yes, it was invented in Pasadena! Probably. Tracing the cheeseburger from inception to Bob's Big Boy. Pasadena Sun, January 13, 2012, http://articles.pasadenasun.com/2012-01-13/entertainment/30625308_1_bob-s-big-boy-pasadena-museum-menu/2

John Lautner, Wikipedia, http://en.wikipedia.org/wiki/John_Lautner

Steve Tice, Los Angeles Times, The LA Scene Then and Now, September 21, 1992
The Ledger, Sec. 7, Page 3, Thursday, September 1976 Successful Duo.

Neighborhood Column

Leaf Blowers - Bad Idea?

By Adele Levitt

Hello, Neighbors.

As promised, our first action item proposal to effect immediate, positive and dramatic changes to our quality of life here in our beautiful SRNA neighborhoods is to:

TURN OFF THE LEAF BLOWERS!

If everyone who reads this proposal would discontinue regular use of leaf blowers on their properties, it would yield immense benefits to the community. If everyone would ask a neighbor or friend who uses a leaf blower, or employs a gardener who uses one, to stop, these benefits would increase exponentially. This is action that you can take today to effect positive, dramatic change to our quality of life.

Consider the following points:

1. Most gasoline-powered blowers are built with the worst type of polluting two cycle or two stroke engines, and are designed to run on a mixture of gasoline and oil; therefore, they spew far more pollution, gases and particulates into the air than the four cycle engines used in automobiles and trucks. The small (25cc) leaf blower engines actually emit more pollution than automobile engines which are up to 100 times larger. In fact, according to an Edmunds.com article, a typical two cycle leaf blower emits nearly 33 times as much CO₂ as a Ford F150 pickup truck with a 6.2 liter motor.
2. The acceptable decibel level of leaf blowers defined in Pasadena Muni Code 9.37.030 is 65 decibels from a distance of 50 feet. Many leaf blowers in actual use far exceed this limit. This is not only unhealthy, it disturbs the peace of our neighborhoods, diminishing our quality of life.
3. It doesn't take an environmental engineer to calculate that blowing clouds of dirt and dust

into the air we breathe is unhealthy for all of us. You may notice that most of the gardeners using the leaf blowers are wearing face masks. Do you really think that the particulate matter blown about does not end up in our homes and in our lungs? Next time you see animal poop in the street, think about inhaling the toxins in it-you get the picture.

4. Blowing our hillsides and flower beds removes topsoil. Then, when it rains, or when we water, the soil is further eroded from the roots of our trees and shrubs. In seeking to clear debris, we are actually blowing away the beneficial and essential elements from our gardens, yards, and hillsides.

For all the harm generated by leaf blowers, what are the compensating benefits? If your gardener asks you for more money, are you willing to pay a few more dollars a month? Are you willing to find a gardener who doesn't use leaf blowers on a regular basis? In summary, all we ask is that you each do a cost/benefit analysis to decide whether to discontinue the use of leaf blowers on your property. Each resident who does so will effect an immediate, positive change in our quality of life, and we sincerely thank you.

[For more information regarding the municipal code click here](#)

Source: www.edmunds.com/car-reviews/features/emissions-test-car-vs-truck-vs-leaf-blower.html

Pasadena Fire Department

RED FLAG ALERTS

Since 2009, Pasadena Municipal Code 10.65 prohibits parking on posted, pre-designated narrow roads and streets during declared RED FLAG ALERTS.

Generally days that have high temperatures, dry conditions and winds are mostly likely to cause an alert. Please check www.cityofpasadena.net/Fire/Red_Flag/ for more information.

The Pasadena Fire Department has announced that the waiver / grace period for limited enforcement is over.

Vehicles violating PMC Chapter 10.65 will be **ticketed and towed.**

Residents were mailed the announcement. To view click: [PFD Annoucement Mailer](#)

Residents can register for PLEAS, a system to alert you when a Red Flag Alert has occurred.

**SRNA Sponsors
National Night Out
For Neighbors
August 5th, 2014**



POLICE-COMMUNITY PARTNERSHIPS

Tuesday, August 5th

6:00pm-8:30pm

455 Laguna Road

Pasadena, CA 91105

(North of La Loma Road)

*****FREE*****

Hot Dogs

Ice Cream

Old Fashioned Lemonade

BRING THE FAMILY AND KIDS

On August 5th communities nationwide, including the City of Pasadena, will recognize the 31st Annual National Night Out (NNO).

What this event is intended to accomplish: Send a message to criminals that our neighborhoods are watchful and organized. Strengthen neighborhood support and police-community relationships. Heighten crime and drug prevention awareness

SRNA supports the National Association of Town Watch (NATW) & National Night Out (NNO).

For more information go to: www.natw.org

DONATE, JOIN OR RENEW YOUR MEMBERSHIP WITH SRNA

Join SRNA Today! -

West Pasadena's Newest and Fastest growing neighborhood organization

dedicated to the San Rafael neighborhoods area.

MEMBERSHIP LEVELS:	
Member	\$ 20.00
Household	\$ 35.00
Sustaining	\$ 100.00
Patron	\$ 250.00
Benefactor	\$ 500.00

Please send a check by mail to:

**San Rafael Neighborhoods Association (SRNA)
PO Box 92617
Pasadena, CA 91109**

OR

Join at our website:
www.srnapasadena.org
and click the tab "Join Us"

Debit or Credit cards accepted.

Sign up for our FREE News and Notices:

<http://srnapasadena.org/join-us/>

SRNA posts our Newsletters on www.srnapasadena.org

SRNA is looking for people to be part of our organization. Represent your street and your concerns. Write to us if you would like to help make a difference and express your area of interest.



The mission of the San Rafael Neighborhoods Association (SRNA) is to enhance and maintain the character and quality of all San Rafael neighborhoods through advocacy and an activated community.

SRNA is registered with the City of Pasadena/Neighborhood Connections office.
Membership dues/donations are Not Tax Deductible.