

# Summer 2015 SRNA Newsletter

Vol 4, Issue 2

Contact: [info@srnapasadena.org](mailto:info@srnapasadena.org)  
On the web at [www.srnapasadena.org](http://www.srnapasadena.org)

## IN THIS ISSUE

[New Water Restrictions](#)

[La Loma Bridge](#)

[710 Metro DEIR News](#)

[Birthday Celebration](#)

[LA Harbor Tour](#)

[The GRID Solution](#)

[San Rafael School](#)

[Rose Bowl Music Festival](#)

[Avenue 64 News](#)

[ID Theft & Computer Safety](#)

[Hillsides Master Plan](#)

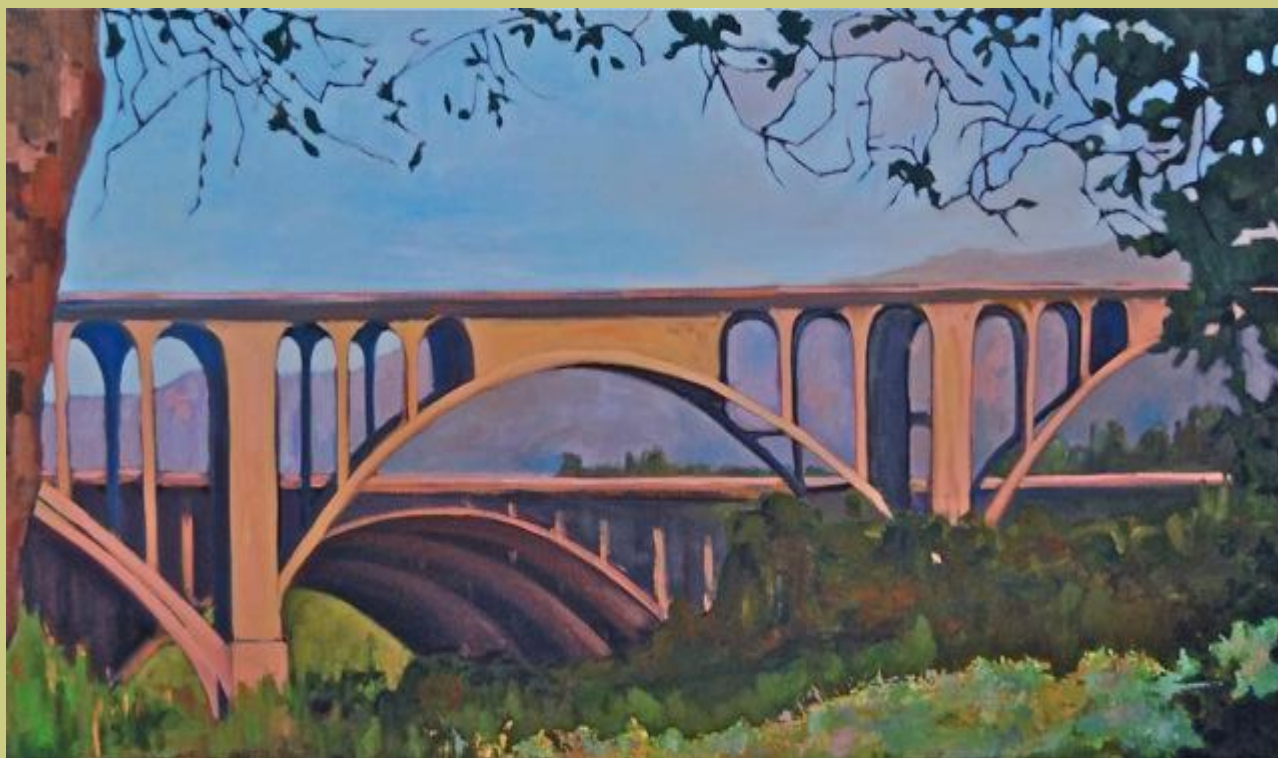
[4th of July Fun](#)

[National Night Out](#)

[City Council News](#)

[Rim of the Valley News](#)

[Rose Bowl EIR/ NFL](#)



The beautiful artwork showcased in SRNA newsletters is that of SRNA member Wendi Moffly. SRNA is grateful for the warmth Wendi's artwork brings to our pages. In this edition of the newsletter, we are happy to share Wendi's latest work.

\*\*\*\*\*

### **SRNA 2015 Board**

Mary Dee Romney-President  
Robin Salzer-Vice President  
Mary Beth Bridges-Vice President  
Stan Clark - Treasurer  
Adele Levitt-Secretary

#### **Directors:**

Robin Salzer  
Mary Beth Bridges  
Stan Clark  
Ann Kelley  
Mary Dee Romney  
Andy Gooden  
Freddie Hannan  
Adele Levitt  
Joanne Fletcher  
Kathy Goodwin

SRNA Artist-Wendi Moffly

\*\*\*\*\*

## MEETING ANNOUNCEMENT

### SRNA General Meetings

WHEN: FIRST WEDNESDAY EVERY MONTH

WHERE: CHURCH OF THE ANGELS  
CHURCH HALL

1100 AVENUE 64  
7 PM

### Next Meeting

**August 5, 2015**

**Dark in July**

SRNA GENERAL MEETINGS ARE OPEN TO ALL MEMBERS OF THE PUBLIC

## Pasadena Water Restrictions



As drought conditions have worsened in California, the Governor has issued several executive orders calling for extraordinary water conservation measures. As a result, Pasadena Water and Power is mandated to reduce overall water use by 28% from calendar year 2013 levels. Water agencies face the prospect of fines up to \$10,000 per day for non-compliance.

To achieve the reduction goal, all of us need to do our part. The Pasadena City Council on June 1st, has formally adopted the Level 2 Water Supply Shortage plan with the following mandates:

- Bans outdoor watering on Thursdays. Outdoor watering is now allowed only on two days per week:

**Tuesdays and Saturdays, before 9 am or after 6 pm**

**No watering outdoors between 9 am and 6 pm,  
except with a handheld container or hose with a shutoff nozzle**

- Reinforces that violators face fines up to \$500 per incident. No turf irrigation within 48-

- hours following a measurable rain
- No washing hard or paved surfaces using potable water, except as necessary to alleviate safety and/or sanitary hazards
  - All master-metered multifamily properties must certify installation of water-efficient shower heads and aerators on faucets by September 30, 2015
  - The two-day per week outdoor watering schedule for Tuesdays and Saturdays is effective immediately through October, with watering only before 9 a.m. or after 6 p.m.
  - A one-day per week outdoor watering limit takes effect November to March
  - All identified water leaks must be fixed within 48 hours
  - Filling ornamental lakes and ponds is prohibited
  - Fountains must have recirculating pumps with no run-off on pavements.

For more information on the new restrictions and to view the updated PWP Water Gauge go to: [www.cityofpasadena.net/waterandpower/SaveWater/](http://www.cityofpasadena.net/waterandpower/SaveWater/)

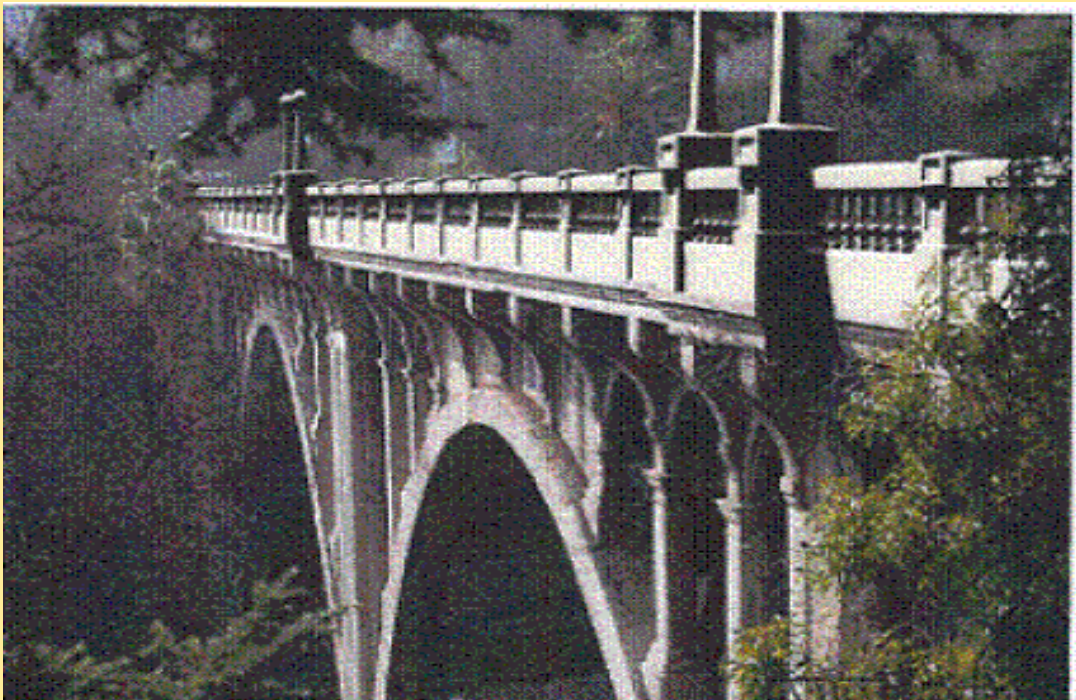
For more information on how to care for your trees during a drought go to: <http://cityofpasadena.net/waterandpower/healthytrees/>

## La Loma Bridge Closure

*What you should know...*

**\*\*\*\*LA LOMA BRIDGE TO CLOSE IN JULY 2015\*\*\*\***

*Stayed tuned for actual closure date from the City*



Artist's rendering of the completed bridge - Fall of 2016. Courtesy of the City of Pasadena

The La Loma Bridge, according to city engineers, will be closing sometime in July. Planned detours are mapped on the city website and will be flashed on electronic signage [http://www.cityofpasadena.net/PublicWorks/La\\_Loma\\_Bridge\\_Project/](http://www.cityofpasadena.net/PublicWorks/La_Loma_Bridge_Project/)



Traffic Management Plan & and Detours  
(Courtesy of Public Works Department)

Primary detour map:



Local access map:



Click here for the bridge [Project Fact Sheet](#) - Click here for the [Trail Map Info](#)

For more information on the project:

[http://cityofpasadena.net/PublicWorks/La\\_Loma\\_Bridge\\_Project/](http://cityofpasadena.net/PublicWorks/La_Loma_Bridge_Project/)

Click here for the [Bridge Powerpoint Presentation](#)

## Metro DEIR Tunnel Update

Caltrans and Metro have **extended the time to comment** on the Draft Environmental Impact Report (DEIR) for the 710 North project.

The public has until **August 5th, 2015** to comment.

This is an additional thirty days. Metro has released the long awaited cost-benefits analysis (CBA). The document, 44 pages, purports net benefits for each alternative (p. 5). However, the report failed to analyze tailpipe exhaust and effects at tunnel portals. In addition, Caltrans/Metro used \$500,000 per mile to estimate the costs of the tunnel for the 710 project while using \$1 billion per mile on the Sepulveda Pass tunnel project. Why the difference? By under-estimating the cost, the cost benefits are over-estimated.

To view the CBA:

[http://media.metro.net/projects\\_studies/sr\\_710/images/attachmentb\\_sr710cbareport\\_2015-0619.pdf](http://media.metro.net/projects_studies/sr_710/images/attachmentb_sr710cbareport_2015-0619.pdf)

**To post a comment on-line:**

<http://www.sr710northcomments.com/>

**Mail written comments to:**

Garrett Damrath, Caltrans District 7  
Division of Environmental Planning  
100 S. Main St., MS-16  
Los Angeles, CA 90012

Caltrans and Metro will review the documents and public comments after the deadline. It is expected the Metro Board may vote on a preferred option in mid-2016.

## Happy Birthday Pasadena

***Happy 129th Birthday Pasadena!***

Presented by Pasadena Museum of History and the City of Pasadena

Everyone is invited to the celebration!

**Sunday, June 28th**

**1 pm to 4 pm**

Pasadena Museum of History  
470 W. Walnut Street

Mayor Terry Tornek will cut the cake at 2:30 p.m. marking Pasadena's 129th year since incorporation.

For more  
information: <http://www.cityofpasadena.net/EkContent.aspx?theme=Navy&id=8589940791&bid=2970&style=news>

## Los Angeles Harbor Port Tour







Pictures courtesy of Jonathan Edwards - DPNA

## **PORT FREIGHT HEADING TOWARD PASADENA**

As an exercise in visualizing the "volume and velocity" required by the Port of Los Angeles in moving international cargo from container ships onto trucks and roadways and into the heartland of America, SRNA recently sponsored a Saturday bus trip to San Pedro for a narrated, water-side tour of shipping operations in the main channel of the Port of Los Angeles.

Because the City of Pasadena is intended as a "host" receptacle to the Port's current transportation funnel, it was important to see those mighty "midgets" now in use by the world's ocean shipping lines (pictured above) to more fully grasp that in 2018 these "midgets" will be replaced by "megaships" measuring 1,410 feet, weighing 255,000 tons and carrying 24,000 freight containers.

That's a lot of freight for Pasadena's end of the funnel.

**A Viable Alternative: GRID Logistics**  
by GRID Logistics, Inc.





When it comes to Southern California's regional goods movement transportation, team members and supporters of GRID Logistics Inc.'s SuperDock™ and Freight Pipeline systems have established the GRID Project as an environmental superior alternative to more of the same 20th Century freeway, freight-rail-yard, and container-port expansion.

It's been six years since GRID Logistics Inc. founders combined experience and expertise to design, develop, and invent economically and environmentally sustainable goods movement infrastructure.

Today, The GRID Logistics Story continues as an unfinished work, but GRID wishes to share a conclusion gleaned through three lessons learned up unto this point:

**Lesson 1:** No matter how positively intended, innovations to reverse pressures on taxpayers for infrastructure, to reverse air and traffic pollution, to reverse unemployment and underemployment, entrenched and fragmented stakeholder interests when stuck in their silos lacking support, collaboration, or direction from genuine leadership will continue to defend the status quo and resist major systemic change.

**Lesson 2:** Whether elected officials at the city, state and national levels, or private sector CEOs, or non-profit executive directors, union leaders, or chancellors of learning institutions, these leaders are in tough spots to risk personal careers built over decades when it comes to doing the unprecedented. All of these leaders regardless of station rightfully need widespread support, preferably through popular public demand identifying viable alternatives.

**Lesson 3:** Everyone wants to keep a well-paying job and elected leaders are no exception. However, aside from special interests, lobbyists, and bureaucrats, elected leaders will often and preferably take cues from overwhelming popular demand from their constituents to take-on change issues. This cuts out the middleman when filling the ballot box to their favor.

Through these lessons, those of us trying to bring real change over these years have arrived to this conclusion: Democracy is alive but needs a helping hand in our region. Popular demand from the public is a very hard way to bring about 21st Century change, but it begins with us as individuals to participate putting forward alternatives at the grass roots level.

If you haven't seen it yet, please watch our **GRID story** and make the decision to take to sharing, asking others to watch and share it through social networks like Facebook, LinkedIn, Twitter, Pinterest, Digg, and others. And just maybe, we will witness through the simple actions of sharing a story, the powers of public demand for superior alternatives to change our region's environmental, socioeconomic, and transportation landscape.

**Watch the video:** [https://www.youtube.com/watch?v=KmmJPqr\\_ObQ](https://www.youtube.com/watch?v=KmmJPqr_ObQ)

GRID Logistics is a Los Angeles Cleantech Incubator Portfolio Company and is now actively seeking out early stage accredited investors. If you qualify or know those who do, please share our story or contact us at [www.gridinc.biz](http://www.gridinc.biz). Article authored by GRID Logistics, Inc.

## **San Rafael Elementary School (SRES)**

### **TRENCHING AT SAN RAFAEL ELEMENTARY SCHOOL**

Assuming seismic "equivalency" between Fire Station 39 and San Rafael Elementary School (SRES) the PUSD Board of Education recently reversed course on plans to surplus and lease the school site and contracted with Earth Systems for slot-trenching to study, for a fifth time, soil samples from the SRES property.

During a June 16th "community briefing" meeting moderated by PUSD board representative Scott Phelps, the representative with Earth Systems was reminded that no fault lines run through the fire station property while four fault lines are known to traverse the school site, casting doubt on the "equivalency" rationale.

Nonetheless, trenching is expected to start anytime soon and estimated to take four days.

The shored, L-shaped slot-trench will begin at the front NE corner at Nithsdale, travel south toward Hermosa and west down to the lower playground.

PUSD responded to various neighbor concerns, below:

- Hours of operation - construction hours as required by the city (hours not referenced)
- Dust - windscreen/shade-cloth to control dust, details in progress
- Piling of dirt - on site, details in progress
- Noise - jack hammers will operate a few hours; no specifics on follow-up equipment other than that the noise will be minor
- Equipment storage - no specifics

- Street closures - none

Cal OSHA will be on the site; soil analysis will be by a third party and presented to CA Geological Survey (CGS).



## **Rose Bowl Music Festival**

The inaugural "Arroyo Seco Music and Arts Festival" is scheduled for June 2016, one short year from now.

Everything about this festival will be "curated" by AEG (producer of Coachella) - the music, sound systems, art installation, food, drink, etc., - except for:

- 1) Drug sales, and
- 2) Sworn law officer presence.

The obvious inattention to these matters should be of huge concern to local residents especially since, after the shut-down of the Silk Road (online drug bazaar) by the FBI/DEA, "festivals" now are a big source of income for drug traffickers.

<http://www.wired.com/2013/11/silk-road/>  
<http://www.wired.com/2015/05/silk-road-2/>

The city will NOT address these matters without strong demands from residents for a safety implementation plan.

## **Avenue 64 Street News**

Due to safety concerns Pasadena Public Works, with input from residents, has installed new stop signs at the corner of Avenue 64 and Nithsdale. Stop signs are now on the southbound and northbound lanes of Avenue 64. Temporary electronic flashing signs are near to warn drivers to prepare to stop. The cross walk has been re-painted.





## Identity Theft & Computer Safety

With identity theft and computer hacking on the rise, here are some tips to help protect you and your information:

- Use a lockable mailbox or use a P.O. Box.
- Do not give personal information, such as account numbers or Social Security numbers over the telephone, through the mail, or over the Internet -- unless you initiated the contact or know with whom you are dealing with.
- Take Social Security numbers off your driver's license and checks.
- Check all account statements carefully to ensure all charges, checks, or withdrawals were authorized.
- Watch your phone bills, cable bills, Internet bills, etc., carefully for any increase in charges.
- Pick up check orders at the Bank.
- Pay attention to billing cycles and statements.
- Cancel and cut up unused or "extra" credit cards.
- Deposit outgoing mail in post office collection boxes or at the local post office instead of at home.
- Promptly remove mail from your mailbox.
- Keep important documents (passport, birth certificate, stocks, and savings accounts) locked in a safe or file drawer, especially if you have roommates or are employing outside help.
- **Shred** old bank and credit card statements, receipts, copies of credit card applications, insurance forms, physician statements, checks and bank statements, expired charge cards that you are discarding, and credit offers received in the mail. Make sure account numbers,



passwords, and addresses are unreadable before discarding.

- Create passwords that make sense to you but are not the usual birth date, anniversary, or pet or maiden name. Change your passwords on a regular basis.
- Keep a written record or photo copy of the contents of your wallet or purse. Keep this record locked away. Don't carry your wallet with you when it is not necessary. Do not carry your Social Security card with you.
- Before you type in your credit card number or any other account information, make sure that the web sites are encrypted, secure, and have a privacy policy. Secure websites use https:\\ (\"s\" for secure).
- Do not open any attachments in an e-mail unless you know the sender.
- The IRS does not e-mail you with bill/collection notices.
- If you receive an e-mail from a financial institution asking for personal information call your bank. Do not reply.
- Hackers are using fake delivery tracking notices asking you to click on the link for additional information. The link is \"phishing\" software.
- Keep your purse or wallet in a safe place at work.
- Never leave transaction receipts at ATM machines, on counters at financial institutions, or at gasoline pumps.
- Order copies of your credit report. You can order Credit Freezes from the credit bureaus.
- Install computer anti-virus software and keep it updated. There are many free and good programs for you to choose from.
- Install anti-malware, anti-adware software on your computers. Also free and effective.
- Clear your browsing history of \"cookies\" and passwords from your internet browser on a regular basis.
- Use firewalls in your home networks. Make sure your DSL or Cable modem/router is encrypted with a password. Also change the manufacturers standard password to one of your own.
- Remove and retain hard drives from computers before you donate/sell them. Deleting personal information may be recoverable. Formatting hard drives only deletes file systems and those are recoverable. Best idea is to delete information but retain the hard drives.
- If you use WiFi hotspots in public spaces (coffee spots, airport, etc) remember those networks are not password protected or secure. Anyone can gain access to your portable device. Avoid sending personal or financial information . Cell phones have WiFi in addition to network access. Unless necessary turn the WiFi access \"off\" on your cell phone.

For more information on WiFi security:

<http://www.onguardonline.gov/articles/0014-tips-using-public-wi-fi-networks>

For more safety information contact: Pasadena Police Department - Community Services Section  
(626) 744-6485 - [www.ci.pasadena.ca.us/police/community\\_services/](http://www.ci.pasadena.ca.us/police/community_services/)

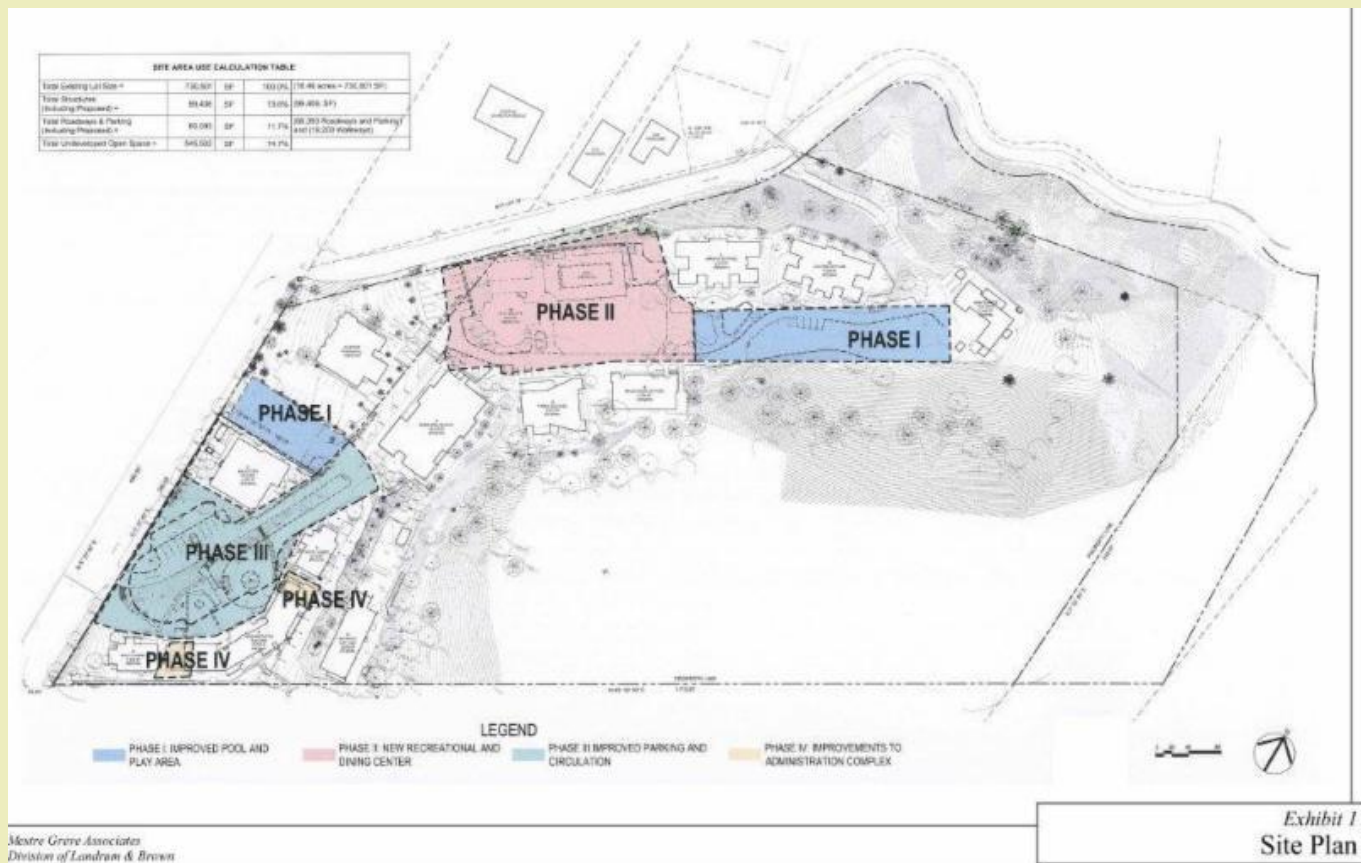
## Hillsides Master Plan News

Founded in 1913, Hillsides' residential and educational services for vulnerable children, youth and their families has been located at 940 Avenue 64 since 1917. In 1993, the City approved Hillsides' Master Plan, which included the construction of two new cottages to house 10 children each, four additional classrooms, a library, nursing office complex, counseling offices, additional parking, and a Maintenance Department facility.

On May 13, 2015, the Planning Commission approved an amendment to Hillside's Master Plan for the construction of a new multi-use structure with 52 subterranean parking spaces, a new pool adjacent to the upper cottages, enhanced outdoor recreational space, additional parking in the area in front of the administration building, and a parking kiosk near the main entrance off Avenue 64 for an attendant to monitor and control campus access and parking. The plan does not propose any expansion of the campus area, will not increase number of children served, and should resolve any remaining parking issues.

The proposed amendment will be heard by the City Council on July 20, 2015.

SRNA thanks Hillside's leadership in working with the community during the planning process addressing neighborhood concerns and for being a good neighbor.



Mestre Greer Associates  
Division of Landmark & Brown



Copy courtesy of Richard McDonald, Esq.

## 4th of July Rose Bowl Celebration



### Have a Safe 4th of July

The City of Pasadena is pleased to offer Americafest - a professional public fireworks show on the Fourth of July at the Rose Bowl Stadium.

Fire and Police officials remind residents that all fireworks, including the "safe and sane" variety, are strictly prohibited and illegal in Pasadena. If found, fireworks will be confiscated; violators' vehicles subject to confiscation and impound; and convictions carry up to one year in jail and fines up to \$50,000 per incident.

Pasadena police and fire personnel will staff checkpoints around the Rose Bowl Stadium to seize all fireworks and arrest offenders. Parking enforcement officers will ensure that vehicles illegally parked in hillside areas on July 4 are impounded.

**For event times and ticket information:**

**<http://www.rosebowlstadium.com/events/detail/americafest>**

## National Night Out - August 4th 2015



**SRNA** will sponsor National Night Out in the San Rafael area for the third consecutive year.

**Stay tuned for special news regarding location and times.**

The Pasadena Police Department and Pasadena Fire Department will be honored guests to meet and greet with residents.

For more on National Night Out: <https://natw.org/>

## Pasadena City Council

The Pasadena City Council is now complete after the election of Mayor Terry Tornek left an opening in District 7. Andy Wilson has been appointed to fill the remaining term that expires in 2017. Gene Masuda has been chosen by the council as Vice-Mayor.

Mayor	Terry Tornek	
District 1	Tyron Hampton	(Pronounced Tyrone)
District 2	Margaret McAustin	
District 3	John Kennedy	
District 4	Gene Masuda	Vice Mayor
District 5	Victor Gordo	
District 6	Steve Madison	
District 7	Andy Wilson	



## RIM of the Valley Update

### NEW IDENTITY FOR SAN RAFAEL NEIGHBORHOODS?

City council Monday night approved Rim of the Valley Plan D, a "boundary adjustment" to the present Santa Monica Mountains National Recreation Area (SMMNRA) designed to pull an additional 650,000 acres from Los Angeles and Ventura counties into the National Park Service management network (NPS-SMMNRA).

Significant assets in the City of Pasadena are included in this new "unit" of the NPS-SMMNRA management overlay - the Rose Bowl, Gamble House, Arroyo Seco, Hahamongna, Raymond Basin and private property in San Rafael and Linda Vista residential neighborhoods.

Consequences to this massive attachment of public and private property to the NPS system will become apparent only with the development of a management plan and budget, neither of which now exist.

Pasadena City Council reportedly received senior staff advice that implications arising from Monday's council vote approving this matter are "effectively none."

This seemingly challenges credulity.

Below is the excerpted body of a letter just sent to the city attorney, the city manager and city council by the Pasadena Neighborhood Coalition (PNC) requesting analysis by the city attorney's office regarding impacts of new NPS management rules as they can and/or will, affect local control and private property.

\*\*\*\*\*

*[To: City Attorney, Ms. Michele Bagneris]*

*City council voted unanimously (Monday, June 22, 2015) to support National Park Service Plan D set out in the Rim of the Valley Natural Resource Study, which boundaries include the Arroyo Seco and the San Rafael Hills within the City of Pasadena.*

*The staff report to city council on this matter was insufficient in all regards, foreclosing proper and thorough council evaluation of local impacts associated with a proposal to put critical local lands under management by the NPS-Santa Monica Mountains National Recreation Area.*

*Because the boundaries of Plan D include significant city properties in the Arroyo Seco and uncounted private residential properties in the San Rafael Hills, the PNC requests emergency action from the Office of the City Attorney.*

*Please provide to city council and to Pasadena residents, a legal interpretation of potential impacts to local control as set out by National Park Service rules found in "National Park Service Management Policies 2006" specifically, but not limited to, the following management policies:*

- 1) Ensuring that "conservation will be predominant when there is a conflict between the protection of resources and their use;" (impacts Rose Bowl)*
- 2) Exercising key authorities related to the "impairment of resources and value;"*

- (impacts established recreation use in the Arroyo)
- 3) Determining water rights on a "case-by-case basis to protect water-related resources;" (impacts Raymond Basin drinking water)
- 4) Reviewing "certain circumstances (under which) condemnation will be necessary." (impacts both private and city property)

*If you are unable to meet this request by June 30th when the public comment period on the Resource Study ends, we request that you work immediately with the city manager and the mayor to request an extension of time so that the city council can evaluate factual information pertaining to potential local impacts from Plan D prior to making a very important decision for the future of Pasadena.*

## **Rose Bowl: EIR NFL Lawsuit**

The Coalition for Preservation of the Arroyo et al. v. City of Pasadena, seeking to prevent the City of Pasadena from leasing the Rose Bowl to an NFL team on an interim basis, has lost its appeal of the trial court's decision. The original dispute is based on the Coalition's contention that the City's environmental impact report was fatally defective. The Court of Appeals panel, consisting of Judges Kitching, J., Edmon, P.J., and Egerton, J, unanimously affirmed the trial court's decision in an opinion issued on May 28, 2015, Case No. B255824. The Coalition has now requested a rehearing based on asserted errors.

## **JOIN OR RENEW YOUR MEMBERSHIP WITH SRNA**

<b>MEMBERSHIP LEVELS:</b>	
<b>Member</b>	<b>\$ 20.00</b>
<b>Household</b>	<b>\$ 35.00</b>
<b>Sustaining</b>	<b>\$ 100.00</b>
<b>Patron</b>	<b>\$ 250.00</b>
<b>Benefactor</b>	<b>\$ 500.00</b>

**You may send your check by mail to:**

**San Rafael Neighborhoods Association  
PO Box 92617  
Pasadena, CA 91109**

**[CLICK HERE: 2015 MEMBERSHIP FORM](#)**

**OR**

**Join us at our website at**  
**[www.srnapasadena.org](http://www.srnapasadena.org)** and click the tab "Join Us"

Debit and credit cards accepted.

Sign up for our News and Notices:

<http://srnapasadena.org/join-us/>



***The mission of the San Rafael Neighborhoods Association is to enhance and maintain the character and quality of all San Rafael neighborhoods through advocacy and an activated community.***

SRNA is a California exempt non-profit 501 c 4 corporation and registered with the City of Pasadena/Neighborhood Connections office.

**Membership Dues/Donations are Not Tax Deductible.**

