



SAN RAFAEL
NEIGHBORHOODS ASSOCIATION

Spring 2015 SRNA Newsletter

Vol 4, Issue 1

Contact: info@srnapasadena.org
On the web at www.srnapasadena.org

IN THIS ISSUE

[La Loma Bridge](#)

[710 Freeway/Tunnel Update](#)

[710 DEIR Hearings](#)

[One More Election](#)

[San Rafael Winery](#)

[Kids Safety Program](#)

[Crime Report](#)

[San Rafael School](#)

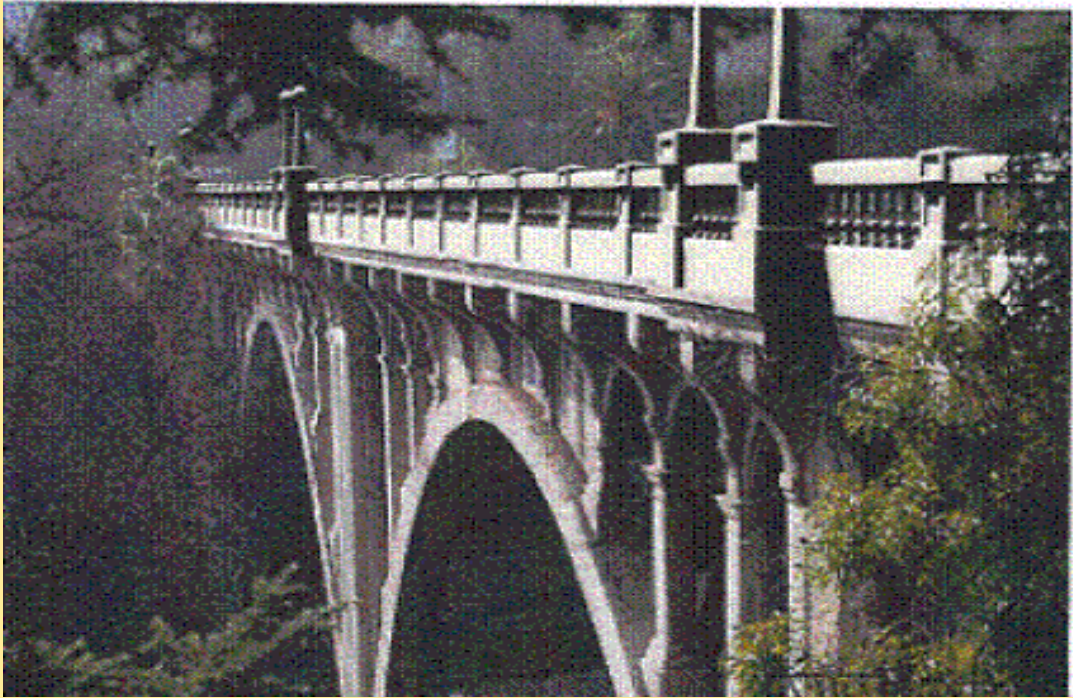
[Rim of the Valley](#)

[Pasadena Archers](#)

[Rose Bowl EIR/ NFL](#)

La Loma Bridge Closure

What you should know...



Artist's rendering of the completed bridge - Fall of 2016. Courtesy of the City of Pasadena

After extensive planning for historic renovation (built 1914) West Pasadena's La Loma Bridge will be under construction for an estimated eighteen months to accomplish the following:

1. Add seismic stability to arches, columns and piers
2. Widen each lane by one foot
3. Rehabilitate aesthetic elements (railings, lighting, etc.)
 - City staff has assured the advisory committee to this project of their place at the table in considering change orders and design variations to approved plans.
 - Federal funds for the project will be managed by Caltrans and work will be done by private contractors.

Living with the project . . . (estimates)

April-May 2015

Staging and start-up construction, bridge remains open

June 2015

Bridge closes

December 2016

Estimated completion

Facts about the project:

- Pre-construction planning includes traffic and trail management
- Planned detours are mapped on the city website and will be flashed on electronic signage [http://www.cityofpasadena.net/PublicWorks/La Loma Bridge Project/](http://www.cityofpasadena.net/PublicWorks/La_Loma_Bridge_Project/)
- Staging will occur under the bridge
- Construction impacts to feeder/adjacent streets will be minimal until the final phase of refurbishing entry aprons
- Trails on the west side of the Arroyo will be closed
- Pedestrian bridges at the stables and the casting pond will remain open
- Trees and brush under/adjacent to the bridge already have been removed for scaffolding needed to support arches
- New trees will be planted after construction
- City Public Works early on calculated electrical power loads needed to supply both residents and construction; additional power vaults have been installed

**** Input from neighbors at a special meeting March 18th raised specific traffic management questions for staff attention:

1. Expected increase in traffic: Avenue 64-Burleigh-Laguna
2. Visibility problems at San Rafael and Colorado
3. School traffic congestion: Maranantha, San Rafael and Pacific Oaks
4. Need for timely completion due to access and safety concerns

Final feature to project:

Neighborhood patience and good safety practices on affected streets and trails!

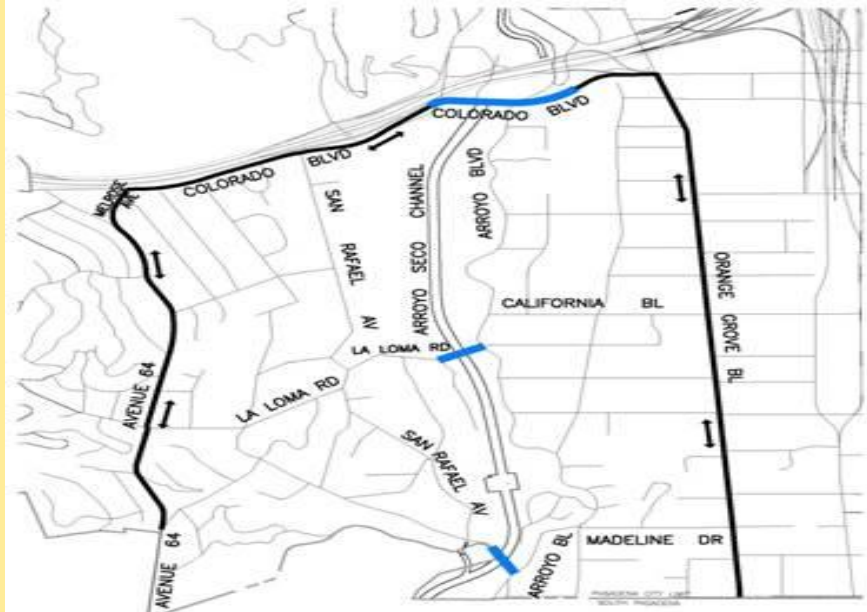
This will not be easy . . .

Thank you!

SRNA

Traffic Management Plan & Detours
(Courtesy of Public Works Department)

Primary detour map:



Local access map:



Click here for the bridge [Project Fact Sheet](#) - Click here for the [Trail Map Info](#)

For more information on the project:
http://cityofpasadena.net/PublicWorks/La_Loma_Bridge_Project/

Click here for the [Bridge Powerpoint Presentation](#)

Voices on the 710 Tunnel

(Thanks to Freddie Hannan and Sam Burgess for action in responding to this important matter.)

What neighbors should know about the 710 DEIR process -

The City of Pasadena has been sidelined, without a voice, on the entire matter of the 710 tunnel due to the language of Measure A, approved by Pasadena voters March 6, 2001.

<http://articles.latimes.com/2001/mar/04/local/me-33260>

Measure A declares it is to be the policy of the City of Pasadena "to be in favor of completing the 710 Freeway extension between the I-210 and the I-10 Freeways . . . not (to) be changed or repealed without a vote of the people."

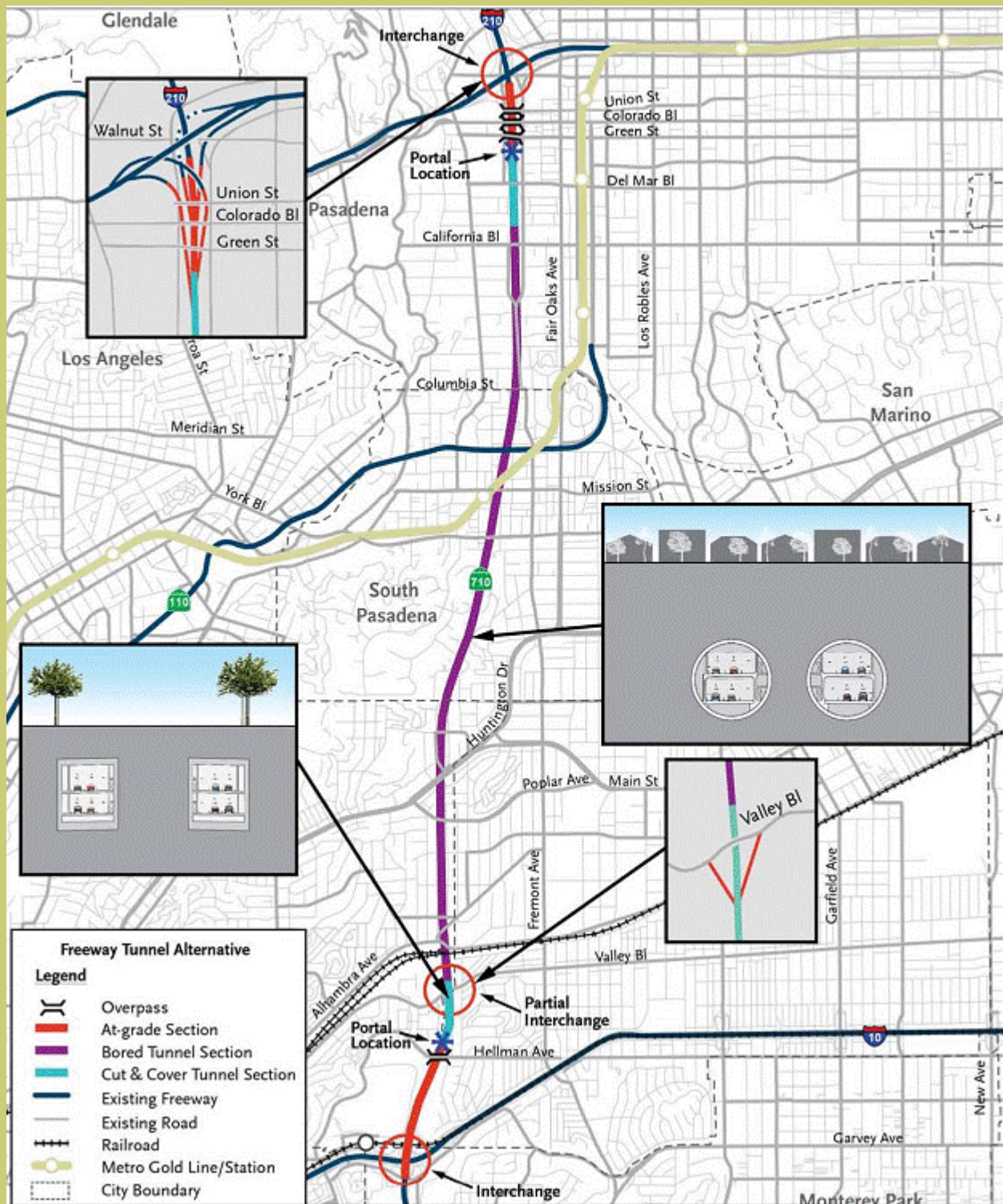
Pasadena's struggle for position at the table as an impacted municipality has been handicapped ever since, as evidenced by past correspondence, agendas, staff notes and presentations - detailed here: <http://www.cityofpasadena.net/sr710/>

However, since 2001 the objectives and design of the earlier proposed extension have dramatically changed. Pasadena City Council has agreed to take a new look at the new project with discussion of lifting policy restrictions imposed by Measure A.

The surface extension proposed 15 years ago as identified by Measure A supporters (above ground, no trucks and no tolls) now is described in the recently released DEIR as an entirely different project.

Below is a first-take of the physical layout of the proposed twin bore tunnel from the newly-released DEIR

Next Page for the layout map:



Tunnel Map - SR-710 EIR/EIS 3-6-15. Tunnel Systems Report Page 6

Each of Two Tunnels:
 4.2 miles of bored tunnel
 .7 miles of cut and cover tunnel
 1.4 miles of at-grade segments.
 Total: 6.3 miles

Bored Tunnels Details:

The outside diameter of the final lined tunnels will be about 58 1/2'. However, the outside diameter of the excavated tunnels will be about 60'.

Construction Portals: Areas that are needed and must be excavated just to get the tunnel boring machines and construction materials in place before boring can begin.

South Portal: It will begin immediately North of Hellman Ave.--in Alhambra and NOT in Los Angeles. However, the at-grade section will begin just south of the 10 Freeway.--in Monterey Park. There will be an entrance & exit to the south 710 from Valley Blvd.--as it is now. (No entrance/exit from the tunnels to Valley Blvd.) In other words, it will not change the traffic pattern of today and may, in fact, increase traffic on Valley Blvd. The map shows an interchange with the 710/10 freeways. Assumes motorists will be able to travel north into the 710 tunnel and exit to the 10 while traveling south.

North Portal: The portal will be immediately south of Green St. There will be NO SURFACE STREET entrances or exits. There will, however, be six (6) freeway entrances/exits:

to/from the 134 (2)
to/from the N. 210 (La Canada) (2)
to/from the E. 210 (Pasadena) (2)

This is going to make for some exciting traffic patterns at the next (surface street) entrance/exit of the above freeways.

North Portal "Smoke/Ventilation" Towers:

Among the 26,625 page EIR is a rendering of the proposed "Smoke Stacks", or ventilation towers that would be needed at both ends of the tunnel. The picture below represents exhausts stacks on the Colorado Blvd bridge looking East.

Next page for towers:



Metro Visual Simulation. Proposed at West Colorado Blvd.

Mr. Burgess learned from attending the Technical Advisory Committee (TAC) meeting March 11th that of the six ventilation structures (50' smokestacks in Old Pasadena) only one is intended as a functioning ventilator, the remaining five are intended for "aesthetic purposes . . . as a memorial visual element."

Quotes from the DEIR: (Volume 1 - Table 3.6.3 - Pages 3.6 -45-48)

"The overall change in visual quality will be minor"

"The new ventilation structures will add a predominant and memorial visual element..."

"The structures will create a visual flow which follows the perspective lines toward Old Town Pasadena"

"Unity will increase with the visual flow...being reinforced by the new ventilation structures"

To access the **DEIR** (26,625 pages), go here:

www.cityofpasadena.net/sr710/

Please post your comments here:

www.dot.ca.gov/dist07/resources/envdocs/docs/710study/draft_eir-eis/comments.php

Sign The Petition Opposing The Tunnel!

www.no710.com/pdf/petition-c.pdf

IF YOU WANT TO END THE ERA OF MUNICIPAL MUTENESS ON THIS MASSIVE PROJECT DESTINED TO FOREVER CHANGE THE CHARACTER OF PASADENA,

JOIN SRNA AND SUPPORT COUNCIL ACTION TO LIFT POLICY RESTRICTIONS IMPOSED BY MEASURE A.

PLEASE ATTEND THIS COUNCIL MEETING!

Monday, April 13 - 6:30 pm
Pasadena City Council Meeting
Pasadena Convention Center - Grand Ballroom
300 East Green Street

Pasadena Working Group to present tunnel objections to city council

"The seven-member SR-710 Alternative Working Group said in a March 9 letter to Pasadena Mayor Bill Bogaard and City Manager Michael Beck that Pasadena ***should reject the tunnel option***. Instead, the panel recommends Caltrans and Metro build alternatives that focus on *moving people, rather than vehicles...*"

www.pasadenastarnews.com/general-news/20150317/pasadena-working-group-to-present-city-council-with-objections-to-710-tunnel

710 DEIR Hearings

Please get your opinion of the 710 proposals into public record by attending one, some or all of the below meetings.

Monday, March 30 - 6 pm to 9:00 pm

The Pat Brown Institute at California State University Los Angeles and the League of Women Voters of Pasadena are holding a 710 freeway extension forum titled:
"SR-710 North -Extend or Not?"

The forum will compare and contrast views on the proposed freeway project.
The forum will be moderated by Executive Director: Dr. Raphael Sonenshein.

Cal State LA - Golden Eagle Ballroom
5151 State University Drive
Los Angeles, CA. 90032
6:00-7:00 Reception
7:00-9:00 Program

Register Now:

<http://tiny.cc/NEWSR710Forum>

Or Call: 323-343-3770

Saturday, April 11 - Metro Public Hearing

Map viewing 10 am to 11 am
Public hearing 11 am to 4 pm
East Los Angeles College, Rosco Ingalls Auditorium
1301 Avenida Cesar Chavez
Monterey Park, CA 91754

Monday, April 13 - 6:30 pm

Pasadena City Council Meeting
Pasadena Convention Center - Grand Ballroom
300 East Green Street, Pasadena, CA

Tuesday, April 14 - Metro Public Hearing

Map viewing 5 pm - 6 pm
Public hearing 6 pm - 9 pm
Pasadena Convention Center
300 East Green Street Pasadena, CA 91101

A third Metro meeting place/time to be determined.

Please plan on attending as many as you can. Wear your No-710 T-shirts and buttons.

One More Election for Pasadena

Pasadena mayoral run-off candidates from the March 10th primary now competing to fill the crucial role as Pasadena's next mayor are Vice-Mayor Jacque Robinson, currently representing Council District 1 and Councilman Terry Tornek, currently representing Council District 7.

Also facing a run-off, but not directly affecting District 6, are former Pasadena Fire Chief Calvin Wells and PUSD Board of Education member Tyron Hampton, competing to represent Council District 1.

Mayoral Debates:

Tuesday March 31, 2015

Star News Debate

7 pm

Marshall School auditorium - 990 N. Allen Ave.

Tuesday April 7, 2015

Larry Mantle (KPCC) to Moderate

7 pm

Pasadena Convention Center - 300 E. Green St. Pasadena

Official March 10th Election Results:

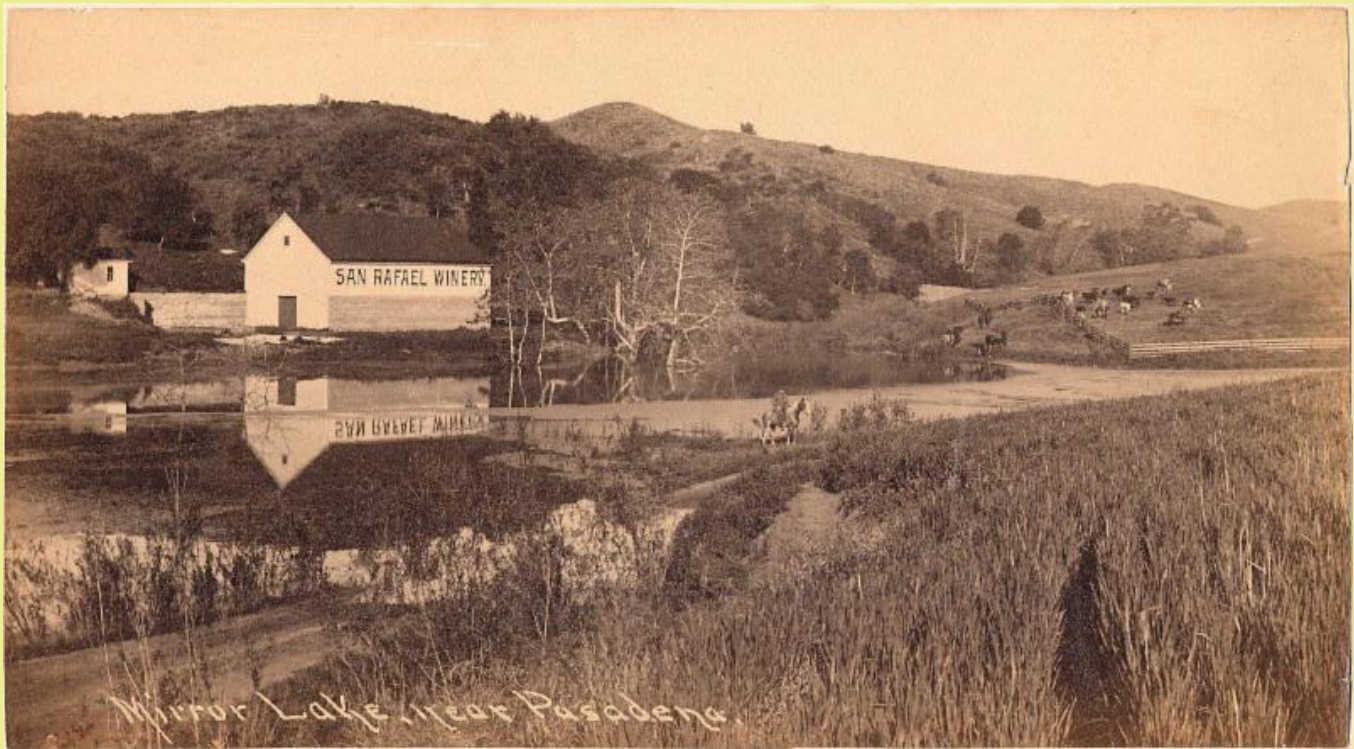
(**Bold** indicates a run-off)

MAYOR			Council 1		
NAME	VOTES	% PERCENT	NAME	VOTES	% PERCENT
SHAY	634	4.20%	ACEVEDO	61	2.73%
MORGAN	2250	14.91%	WELLS	551	24.62%
TORNEK	5475	36.29%	BOYDEN	267	11.93%
THOMSON	2008	13.31%	BIERY	337	15.06%
ROBINSON	4643	30.78%	HAMPTON	1022	45.67%
HARDIN	76	0.50%			
	15086			2238	
Council 2			Council 4		
McAustin	1430	100%	Masuda	2155	100%
Council 6					
Madison	2381	100%			
PASADENA UNIFIED SCHOOL DISTRICT					
District 2			District 4		
NAME	VOTES	% PERCENT	NAME	VOTES	% PERCENT
Dagger	414	15.68%	Turner	760	43.98%
Boulghourjian	1814	68.69%	Cahalan	968	56.02%
Rojas	413	15.64%			
	2641			1728	
District 6					
Siraganian	1294	42.23%			
Torres	1770	57.77%			
	3064				

For more information: www.cityofpasadena.net/cityclerk/election2015/

SRNA does not endorse candidates or political offices.
We encourage you to be informed on the issues and positions of any candidate.

San Rafael Winery



Circa 1875

Courtesy of the Pasadena Museum of History

S2-5(r)

Did you know the San Rafael area once had a thriving winery?

It's true. Viticulture in the San Rafael area began in the late 1870's. Many may remember the San Gabriel Mission, built in 1771, produced as much as 50,000 gallons of wine a year by the early 1800's. San Rafael Winery was started by Prudent Beaudry around 1875 while he was Mayor of Los Angeles (1874-1876). The winery was built on the banks of Mirror Lake (now called Johnston Lake). Beaudry referred to the lake as Beaudry Lake. The main wine building still exists today. It was converted into a private residence in 1949.

The wine business proved to be an attraction to many settlers seeking their own venture into the profitable business. One such settler was Benjamin D. Wilson, aka Don Benito. The Pasadena Unified School District has an elementary school named after him - Don Benito Fundamental. Benito started Lake Vineyard Winery. By 1873, Benito had over 230,000 grapevines and sold wine throughout the United States. After Benito died in 1878, his son-in-law expanded the winery to produce 1,500,000 gallons per year and the winery's crushers could crush 250,000 pounds of grapes per day! Much of what is Arcadia today was once part of a 1,200 acre winery operated by Elias "Lucky" Baldwin.

By the late 1880's, Pierce's Disease or "PD" - (named after Newton Pierce, the first plant pathologist) - an insect transmitted bacteria found on grapevines, caused a panic in the region. Many vintners began selling as their investors thought the wine business was now too risky.

Around 1887, Beaudry sold the San Rafael Winery and adjacent land to the Campbell-Johnson family who used the land primarily for agricultural purposes. By the 1930's every major vintner had closed its doors. Homebuilding increased substantially during the 1940's through the 1950's. In 1953 a group of homeowners formed the private Brookmere Association which includes the Lake.

Today, the tranquil lake has been a movie set from time to time, and is home to many birds.

For more on the Campbell-Johnson family click here: [San Rafael Area History](#)

Sources:

The Neighborhood Newsletter: 1989 Holiday Edition by: Dominic deFazio, Realtor.

Pasadena Museum of History - Research Library and Photo S2-5 (r).

<http://pasadenaadjacent.com/2010/03/11/beaudry-lake-johnson-lake-mirror-lake-johnston-retreat/>

<http://laeastside.com/2010/12/stream-dream-johnstons-lake/>

<http://hometown-pasadena.com/history/the-bordeaux-that-nearly-was/6716>

Kids Safety Academy - Pasadena Police Department



Does your child have the skills and confidence to protect themselves in a difficult situation or in an emergency?

Let the Pasadena Police Department help! In cooperation with the Pasadena Police Foundation,

the Lions Club, and local volunteers the City offers the Pasadena Kid's Safety Academy. Conducted two to three times a year over seven consecutive Saturdays. Local children have the opportunity to learn from professionals. Staff is always looking for new topics to cover and all sessions are different. The following list is just a sample of topics that might be covered:

- Self Defense
- Stranger Danger
- Internet Safety
- Fire Safety
- Pool Safety
- CPR
- Bike Safety
- Nature Safety
- Art Safety
- Sports Safety
- Music Safety

Each seven-week course is unique. The classes are for children ages 6 to 12 and include hands-on activities. Attendance by a parent is required to ensure the family shares the experience and understands the important elements and vital life skills taught in each session. The skills are most useful if supported by parents and practiced at home.

Students in the class receive information, handouts, IDs and are fingerprinted by the Pasadena Police Department. After completing the Safety Academy the graduates receive a diploma! This is a wonderful service provided by our City and a great opportunity for children to interact with our police officers in a supportive, constructive environment.

For more information contact Karla Kauhola, Pasadena Police Department - Community Services Section at 626-744-4551.

www.pasadenapolicefoundation.org/kidssafety

Crime Report:

DISTRICT 6 CRIME STATS			
	2013	2014	% Change
MURDER	0	1	100%
RAPE	2	5	150%
ROBBERY	16	10	-38%
ASSAULT DEADLY WEAPON (ADW)	7	10	43%
ASSAULT	21	26	24%
ASSAULT DOMESTIC VIOLENCE	7	8	14%
BURGLARY COMM	59	55	-7%

BURGLARY OTHER	22	11	-50%
BURGLARY RESIDENTIAL	93	81	-13%
BURGLARY VEHICLE	80	62	-23%
THEFT	216	239	11%

Source: http://www.cityofpasadena.net/Police/Crime_Statistics/

Contact the Pasadena Police Department Community Services Section for programs and services on crime prevention, safety tips and neighborhood watch at 626-744-7650

http://cityofpasadena.net/police/community_services/



San Rafael Elementary School (SRES)

Big step backward toward trenching?

New senior staff with the Pasadena Unified School District, without prior approval from the Board of Education or outreach to impacted neighbors, have taken quiet and unilateral action to reconsider costly and disruptive seismic trenching in the SRES environs.

If such action is undertaken it will constitute a hi-jacking of a conclusive, statutory process finalized by a Board of Education vote to surplus and lease the SRES site.

Please link to the 1) full story of this development presented to the SRNA Board by Mary Dee Romney and 2) photos of what to expect with the trenching process.

[San Rafael Elementary Historical Record](#)

[SRES Trenching Presentation](#)



Congressman Schiff's Rim of the Valley and the Arroyo Seco

SRNA continues to have concerns about Congressman Adam Schiff's proposed Rim of the Valley National Recreation Area (NRA) becoming a "national monument" by executive order.

Rim of the Valley acreage, nearly a half-million acres intended to "fill the gap" in the national park system includes the Arroyo Seco, San Rafael Hills and Verdugo Mountains.

Home to local infrastructure for drinking water and flood control, management of this massive area from Pasadena to Magic Mountain is anticipated to be through the Santa Monica Mountains Conservancy and various federal agencies.

Correspondence on this matter from SRNA President Mary Dee Romney February 27th to Mayor Bogaard follows:

Mayor Bogaard:

I suspect the Rim of the Valley National Recreation Area proposed by Adam Schiff soon will morph from a national recreation area (NRA) into a national monument by executive order. The subject area includes the Arroyo Seco and the Rose Bowl.

The Rim of the Valley resource study was to have been completed by January 2015. Toward the end of last year I requested updates and a copy of the report; my request was acknowledged. To date, nothing has been released.

Because any action will impact the Arroyo and the Raymond Basin, San Rafael Neighborhoods Association (SRNA) invited Teresa Lamb Simson to join our February 4th meeting for discussion. She was pleased to do so but declined after learning of our concerns about a possible national monument by executive proclamation and loss of local control.

Some information:

1) Congressman Schiff's speech to Congress (1/25/05) identified the "famed Arroyo Seco, home of Pasadena's Rose Bowl" for inclusion in the Rim of the Valley Corridor, a greatly expanded Santa Monica Mountains National Recreation Area (NRA) - 2nd paragraph:

<http://votesmart.org/public-statement/77664/rim-of-the-valley-corridor-study-act#.VPD9MOGUbmc>

2) The San Gabriel Mountains National Monument Executive Proclamation (initially a national recreation area) puts an emphasized focus on species protection ("yellow-legged frog and arroyo toad"), a far different situation than envisioned by stakeholders working to develop plans for the originally proposed national recreation area:

<http://www.whitehouse.gov/the-press-office/2014/10/10/presidential-proclamation-san-gabriel-mountains-national-monument>

3) Los Angeles County Public Works now must deal with new and burdensome species demands from Fish and Wildlife with certain impacts to local water sources and infrastructure, the extent of which is unknown:

[LA County Letter](#) (January 22, 2015)

4) The Pasadena Weekly, in this week's issue, printed my concerns regarding impacts to water/flood infrastructure by language in the San Gabriels proclamation and, concerns Rim of the Valley would abruptly convert from NRA status to national monument by proclamation - delivering similar issues in Pasadena:

Pasadena Weekly (Trust Misplaced):

<http://www.pasadenaweekly.com/cms/story/detail/letters/14192/>

5) The Antiquities Act, used to justify national monument acquisitions, does not permit wholesale federal land grabs of the size and scale of the San Gabriels and/or Rim of the Valley.

<http://www.cr.nps.gov/local-law/anti1906.htm>

Yet, courts consistently have ruled for the Feds:

<http://fas.org/sgp/crs/misc/R41330.pdf>

6) Legislation Now Pending to Amend Antiquities Act to allow for local controls and accountability:

Senate Bill 228

[https://www.congress.gov/bill/114th-congress/senate-bill/228/text?q={%22search%22%3A\[%22SB+228+Antiquities+Act%22\]}](https://www.congress.gov/bill/114th-congress/senate-bill/228/text?q={%22search%22%3A[%22SB+228+Antiquities+Act%22]})

House Bill 330

<http://thomas.loc.gov/cgi-bin/bdquery/D?d114:6:./temp/~bdFgnP::>

House Bill 900

<http://thomas.loc.gov/cgi-bin/bdquery/D?d114:1:./temp/~bdpYJo::>

7) Referral to Agricultural Water Interests: Because Rim of the Valley encompasses the upper reaches of the Santa Clara River (with corridors into the Los Padres) I have referred this matter to large agricultural water interests in Ventura County with vital interests in the matter.

8) It's time to lobby! Because no further work on the Rim resource study has been released, Rim efforts need to be redirected immediately to ensure local controls remain in place.

Thank you, Mayor.

High resolution map of the Rim of the Valley: [Rim of the Valley Map](#)

UPDATE: Pasadena Roving Archers

Following a marathon meeting February 2-3, City Council voted 5-3 to permit a one-year extension of the city's agreement allowing the Pasadena Roving Archers (PRA) continued use of their historic home in the Lower Arroyo.

The city manager was directed by Council to locate an additional site for anticipated growth in the sport. Permitted activities, as established in the Arroyo Seco Master Plan (1990), allow for all existing uses to remain but not to expand. (Ord. 6403 §2)

A lawsuit against the City of Pasadena now has been filed by the Stewards of Public Land, demanding a full Environmental Impact Report (EIR) for use of the Lower Arroyo by a private group.

In September 2014 SRNA submitted a letter to City Council in support of continued use of the Lower Arroyo by the archers. SRNA maintains this position.

Recently announced litigation should not be used as a political cudgel by plaintiffs seeking to flip a council vote - particularly with the matter already exhaustively heard and City Council rejecting the notion of evicting the Pasadena Roving Archers from the Lower Arroyo.

Rose Bowl: EIR NFL Lawsuit

The Coalition for Preservation of the Arroyo, a public interest group, joined by LVAA and its partners SRNA, East Arroyo Neighborhood Preservation Committee (EANPC), and strongly supported by the West Pasadena Residents' Association (WPRA), have appealed a Superior Court decision in favor of the City of Pasadena.

The appeal is scheduled to be heard April 14, 2015 at the California Court of Appeals in Los Angeles by a three-judge panel. Attorneys for both sides will have approximately 15 minutes to present their case and answer any questions by the judges.

A decision is expected by June in the matter.

JOIN OR RENEW YOUR MEMBERSHIP WITH SRNA

MEMBERSHIP LEVELS:	
Member	\$ 20.00
Household	\$ 35.00
Sustaining	\$ 100.00
Patron	\$ 250.00

Benefactor	\$	500.00
------------	----	--------

Please send check by mail to:

San Rafael Neighborhoods Association, Inc.
PO Box 92617
Pasadena, CA 91109

[CLICK HERE: 2015 MEMBERSHIP FORM](#)

OR

Join us at our website at
www.srnapasadena.org and click the tab "Join Us"

Debit and credit cards accepted.

Sign up for our News and Notices:
<http://srnapasadena.org/join-us/>



The mission of the San Rafael Neighborhoods Association is to enhance and maintain the character and quality of all San Rafael neighborhoods through advocacy and an activated community.

SRNA is a California exempt non-profit 501 c 4 corporation and registered with the City of Pasadena/Neighborhood Connections office.

Membership dues/Donations are Not Tax Deductible.

