



Spring 2016 SRNA Newsletter

Vol 5, Issue 1

Contact: info@srapasadena.org
On the web at www.srapasadena.org

IN THIS ISSUE

[La Loma Bridge](#)

[Rim of the Valley](#)

[3-Day Music Festival](#)

[Disaster Response Skills](#)

[New Water Rules](#)

[Library Fundraiser](#)

[Neighborhood Crime](#)

[SRES - Traffic Safety](#)

[710 North Tunnel](#)



The beautiful artwork showcased in SRNA newsletters is that of SRNA member Wendi Moffly. SRNA is grateful for the warmth Wendi's artwork brings to our pages. In this edition of the newsletter, we are happy to share Wendi's latest work.

SRNA 2016 Board

Mary Dee Romney-President
Robin Salzer-Vice President
Mary Beth Bridges-Vice President
Stan Clark - Treasurer
Adele Levitt-Secretary

Directors:

Robin Salzer	Mary Beth Bridges
Stan Clark	Mary Dee Romney
Andy Gooden	Freddie Hannan
Adele Levitt	Kathy Goodwin

Ed Graf - No710 Tunnel Committee
Joanne Fletcher -Utility Advisor
Wendi Moffly -SRNA Artist

MEETING ANNOUNCEMENT

SRNA General Meetings

WHEN: FIRST WEDNESDAY EVERY MONTH

WHERE: CHURCH OF THE ANGELS
CHURCH HALL

1100 AVENUE 64
7 PM

Next Meeting

May 4th, 2016

SRNA GENERAL MEETINGS ARE OPEN TO ALL MEMBERS OF THE PUBLIC

La Loma Bridge Closure Update



As reported by Pasadena City Engineer Brent Maue, PE: The bridge is on schedule to re-open in December 2016. The bridge demolition work is complete and the contractor has transitioned to the construction of the new sub-structure components. As nearby residents are probably well aware, the contractor has recently been installing driven piles for the support of the west abutment. This process is now complete for the entirety of the project. Current project work includes:

1. Installing rebar and forming the west abutment
2. Stripping concrete forms from the east pier
3. Installing concrete forms at the west pier
4. Excavating for the construction of the east abutment

From this point forward, progress at the site will be quite visually apparent and move forward in a lockstep fashion.

The above photos provided by S. Clark. For additional city photos please see:

[www.ci.pasadena.ca.us/PublicWorks/La Loma Bridge Project/](http://www.ci.pasadena.ca.us/PublicWorks/La_Loma_Bridge_Project/)

SRNA thanks Interim City Manager Steve Mermell and City Engineer Brent Maue for this important information.

RIM of the Valley Update

RELEASED!!! **RIM OF THE VALLEY** **Interactive Map**

Wednesday afternoon April 6, Rep. Adam Schiff released an interactive Google map of boundaries defining the Rim of the Valley expansion of the Santa Monica Mountains National Recreation Area into Pasadena and environs stretching throughout the San Fernando Valley and Santa Clarita.

Identified as a "**Boundary Adjustment and Cooperative Conservation Area**," the final RIM proposal adds 313,000 acres to the Santa Monica Mountains National Recreation Area and emphasizes "regional wildlife corridors (and) cooperative conservation approaches" under management by the National Park Service.

Until Wednesday's map release, ambiguities over the final report issued in February were a result of vaguely defined NPS map boundaries. Because much of the Arroyo Seco acreage included homes within the SRNA neighborhood association, **SRNA requested an interactive map from Rep. Schiff. (see SRNA letter of March 15)**

Keep in mind that in this ongoing process, boundaries can change at any time up and until the signing of the legislation. At this point, **maps seem to show a significant reduction of Lower Arroyo and San Rafael Hills neighborhoods, while Linda Vista neighborhoods**- the Rose Bowl and city water infrastructure in the Raymond Basin - still are included.

Additional issues raised by SRNA have not yet been addressed by Rep. Schiff: 1) identification of those staff persons presently writing RIM legislation and their schedule for **local stakeholder meetings**, and 2) express **prohibition of eminent domain** to be included in the RIM legislation.

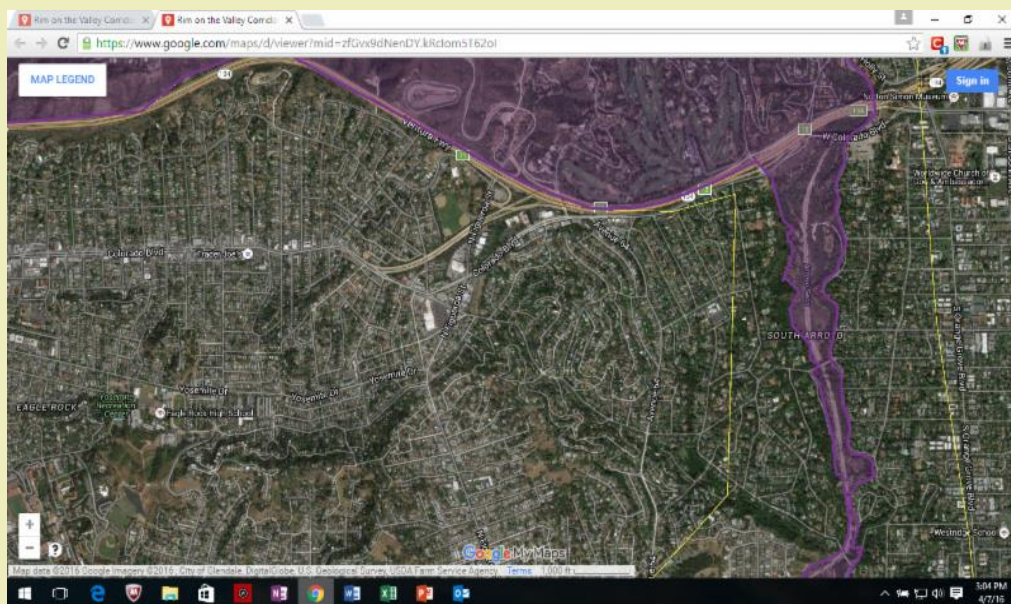
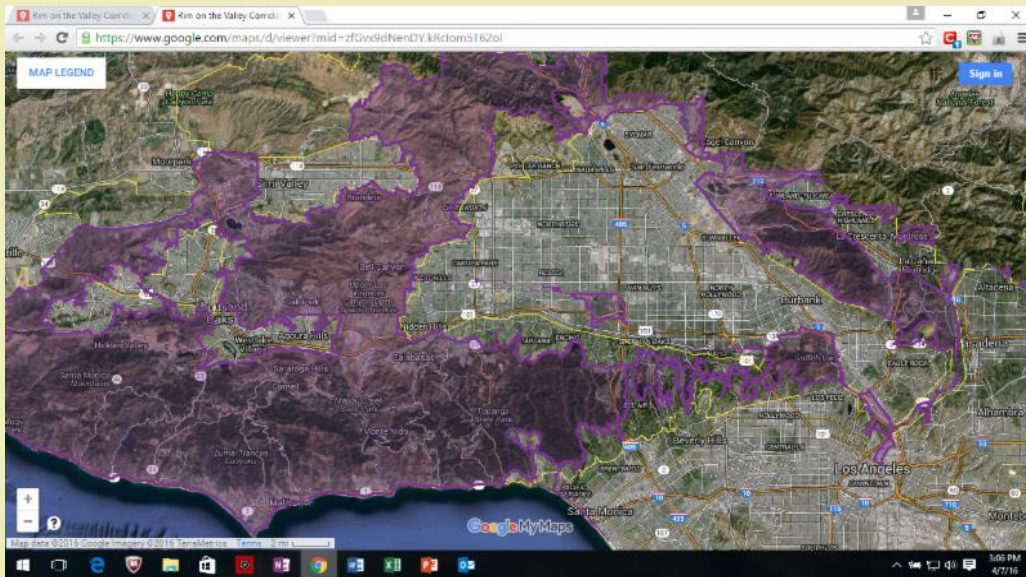
Issues raised by SRNA with Pasadena City Council still have not been addressed: 1) **autonomy for the Rose Bowl**, and 2) a **Raymond Basin audit** to establish benchmarks for the city's water supplies and infrastructure.

SRNA Letter to Representative Adam Schiff

[SRNA Schiff Ltr Pg 1](#)

[SRNA ltr to Schiff Pg 2](#)

Purple lined areas represent Map Alt D Boundaries below:



To view where your home fits in Rim of the Valley, click the link below:

<https://www.google.com/maps/d/viewer?mid=zfGvx9dNenDY.kRcIom5T62oI>

3-Day Music Festival APPROVED



By a vote of 5-2 (Mayor Terry Tornek and Councilperson Tyron Hampton voting no) the Pasadena City Council approved the proposed 3-day music festival to run for 10 years with options to 20. Rose Bowl Operating Company (RBOC) President and Pasadena Councilperson Victor Gordo abstained from the vote although he lobbied for the approval. The agreement with AEG has not been finalized, but the council on Monday gave Rose Bowl GM Darryl Dunn the authority to execute it without bringing it back to the full city council. The agreement will include the possibility of two five year extensions. RBOC and AEG can end the contract early at years three, 10 and 15, according to Dunn.

The actual yearly number of displacement events (events over 20,000 people in the Rose Bowl) continues to be an issue for surrounding neighbors. The vote increased the number from 12 to 15. The actual number can be increased - as in previous years - with council approval. Neighbors want a hard cap, a top limit to control the significant and unmitigated noise, traffic and police issues that occur during large scale events in and around the Rose Bowl. It is noted that large events also displace residents in other parts of Pasadena that are denied access and use of , Kids Space, the Aquatic Center, trails, the golf course and the Arroyo.

Nina Chomsky, president of the Linda Vista-Annandale Association (LVAA), said neighbors worry that a clause in the agreement that would give the Rose Bowl the right of first refusal for other AEG events would mean even more disruptions in their neighborhood. A hard cap would be an acceptable trade-off for the three-day music festival's impacts, she said. ***"We can't go from 15 to 18 to 20 to 25, because all of a sudden we're offered wonderful activities. It may be a tremendous success, but the impacts will be enormous."***

Barring any legal challenge, the event is scheduled to take place in June of 2017.

The San Rafael Neighborhoods Association (SRNA) suggested traffic mitigation patterns on Colorado Blvd and parking limitations for nearby streets in our area that will be impacted. A detailed Caltrans plan for over 50 freeway exits that will be impacted by the event needs to be vetted at least 60 days prior to the 120 day pre-event planning notices. The plans need to be made public for the neighborhoods.

For more information on the event and to view the EIR:

http://www.ci.pasadena.ca.us/Arroyo_Seco_Music_and_Arts_Festival/

Disaster Response Skills Pasadena Fire Department

Building a Neighborhood Response Network

Following a four-hour overview from the Pasadena Fire Department, co-sponsored with SRNA, in basic disaster survival skills (March 12), more SRNA neighbors now are participating in intensive Community Emergency Response Team (CERT) training through the Pasadena Fire Department.

Curriculum for CERT training is set by FEMA. Beginning Saturday April 9, those participating will spend two full Saturdays and two evenings learning skills needed for emergency action in the event the city's safety personnel is disabled and/or unable to respond.

Coursework is described below. SRNA will monitor scheduling of future classes to alert interested neighbors.

Pasadena Fire Department is proud to announce a Community Emergency Response Team (CERT) Class beginning April 9, 2016.

The first 3 class sessions will be conducted at 383 S. Hill Ave, located on the Caltech campus. The final class session will take place at Pasadena Fire Station 33, located at 150 North Lake Avenue, Pasadena.

Here are the dates and times:

Saturday, April 9, 2016 8 am to 5 pm
Tuesday, April 12, 2016 6:00 to 9:00 pm
Wednesday, April 13, 2016 6:00 to 9:00 pm
Saturday, April 16, 2016 8 am to 3:30 pm

Participants must be pre-registered, and must complete all class sessions to receive a Certificate. In this CERT class you will develop skills to help you be better prepared to take care of yourself and your family when disaster strikes, no matter where you are - home, work or play. The coursework follows the FEMA curriculum and includes or addresses the following subjects:

**Disaster Preparedness Fire Safety/Fire Suppression
Light Search & Rescue Disaster Medical Operations
Disaster Psychology Terrorism
CERT Organization & Incident Command System**

The final day of class includes a disaster drill, giving participants an opportunity to put what they've learned in class into action.

Water Rules April 1 through Oct 31

**Pasadena Level 2
Water Shortage
Now in Effect**

Water 2 Days Per Week

On Tues & Sat Only (Apr-Oct)
Prohibited from 9am to 6pm

PASADENA
Water & Power
SERVING THE COMMUNITY SINCE 1894

Level 2 Water Shortage Plan in Effect: Spring/Summer Schedule: **Apr 1 - Oct 31.**

Water 2 Days per Week on Tuesdays and Saturdays

Fall/Winter Schedule: **Nov 1 - Mar 31. Water 1 Day per Week on Saturdays Only**

On June 1, 2015 the Pasadena City Council adopted the Level 2 Water Shortage Plan, under City Ordinance Chapter 13.10. The plan limits outdoor watering to two days per week on Tuesdays and Saturdays from April 1 through Oct 31, and one day per week on Saturdays from Nov. 1 through Mar. 31. The plan also prohibits watering between the hours of 9 a.m. and 6 p.m., requires water leaks to be fixed within 48 hours, and prohibits the filling of ornamental lakes and

ponds. (Please note that the fall/winter watering schedule was also one day per week in 2014 under the previous Level 1 Water Shortage Supply Plan.)

The key water waste prohibitions currently in effect for all PWP water customers include:

- In the spring and summer months property owners can water two days per week on Tuesday and Saturday Apr 1 to Oct 31. Outdoor watering one day per week, on Saturday only, during the fall and winter months, Nov 1 to Mar 31.
- No watering outdoors between 9 a.m. and 6 p.m., **except with a handheld container or hose with a shutoff nozzle.**
- No watering during periods of rain and 48 hours after rain
- All water leaks must be fixed within 48 hours.
- No excessive water flow or runoff onto pavement, gutters or ditches from watering or irrigating landscapes or vegetation of any kind.
- No washing down paved surfaces with potable water unless for safety or sanitation.
- No washing vehicles except by using a handheld bucket or similar container or hose equipped with a water shutoff nozzle.
- No filling of ornamental lakes or ponds.

For more information please see: www.ci.pasadena.ca.us/waterandpower/

Pasadena Library Fundraiser

**Third Annual
Beer, Brats and Books
Fundraiser
"Born to Read Pasadena"
May 7, 2016
7:00 pm
Main Hall - Central Library**

The Friends of the Pasadena Public Library invite you to its 3rd Annual "Beer, Brats and Books" to be held on **May 7th at 7PM in the main hall of Central Library located at 285 E. Walnut Street.** Funds generated by this event will benefit "Born to Read Pasadena", sponsored by the Pasadena Public Library. By providing first time mothers with books for infants and resources on parenting, Born to Read Pasadena aims to develop an early interest in reading.

CraftBeerKing.com including Hanger 24 Craft Brewery will be providing a number of microbrews while **Robin's Wood Fire Barbecue** will be serving up the brats, sauerkraut, salad and their famous garlic fries. Tasty treats from Nothing Bunt Cakes will satisfy everyone's sweet tooth. Tunes from the 60's and 70's will be sung by "Misplaced Priorities" and may invoke a need to get up and dance.

Tickets (\$50 for 1 or \$90 for 2), can be purchased on The Friend's website:

www.friendsppl.org through Pay Pal.

It also possible to send checks made out to FOPPL and mail to: "The Friends of the Pasadena Public Library, 285 E. Walnut St., Pasadena, 91101". Include your name, number of tickets and address.

Crime Challenges

Theft continues to be a persistent problem in neighborhoods. Residents are encouraged to not leave valuables in vehicles or in areas easily seen from the street. Mail theft and mailbox break-ins continue. Here is the link to report federal mailbox theft/break-ins: USPS theft reports: (877) 876-2455 or www.postalinspectors.uspis.gov

For more safety tips on protecting your home and valuables see: <http://home.howstuffworks.com/home-improvement/household-safety/security/discourage-break-ins10.htm>

To view recent preliminary crime statistics please see:
http://www.ci.pasadena.ca.us/Police/Crime_Statistics/

Traffic Safety

San Rafael Elementary School

Many thanks to long-time San Rafael Elementary School (SRES) neighbor **Toby McGill** for neighbor-partnership with Lt. Pete Hettema (Pasadena Police Department, Traffic Section), Assistant Engineer Alberto Felix (Pasadena Department of Transportation), SRES Principal Rodolfo Ramirez and the SRES Site Council for proposing **much-needed traffic solutions to support the school's preference for a disciplined drop-off/pick-up valet line.**

Over-crowding at the school (SRES is the smallest school site in the district) and out-of-district student traffic issues are matters the Board of Education must address (a sixth portable will be added soon to the small, 3.1 acre site), but **student safety is an immediate priority** for neighbors, parents, Principal Ramirez, Pasadena Police Department and Pasadena Department of Transportation.

It is the hope of all involved that the 2016-17 school year at SRES will begin with all SRES parents **compliant with valet-line protocols set by the school and Site Council**, thereby allowing for safe daily entry and exit for their children.

Initial recommendations (below, 1-6), along with **SRNA's appeal April 5th to the PUSD Student Safety Committee for a school crossing guard in the mornings and afternoons**, is where the nuts-and-bolts of the plan begin.

NOTE: While PUSD Superintendent Brian McDonald has children attending SRES, he has provided no opinion and no direction on the matter of traffic/student safety and over-crowding at the site. District representative on the PUSD school board, Scott Phelps is, regrettably, AWOL from many of his duties and obligations as a PUSD Trustee.

RECOMMENDATIONS:

- 1. Red curb for the north side of Hermosa** where Laguna intersects with Hermosa, and east for approximately 25 feet to allow for westbound traffic on Hermosa to remain in the westbound lanes when turning south onto Laguna;
- 2. Post the entire cul-de-sac on the west end of Hermosa "No Stopping"** during school pick-up and drop-off times. Prohibiting cars from parking in the cul-de-sac would allow a safe turnaround for cars dropping off or picking up children on San Miguel at the drop-off and wishing to leave the area northbound rather than continuing south on Laguna. The bridge closure is causing numerous unsafe u-turns, and three point turns in driveways which adds to the congestion in the neighborhood;
- 3. Post both the east and west side of Laguna "No Parking" or "No Stopping"** during school pick-up and drop-off times. This will allow the entire width of the narrow street to be used for two-way traffic and help keep pedestrians off the roadway;
- 4. Place an additional "No Stopping" sign on the southeast curve** of the intersection at San Miguel and Hermosa. Although the "No stopping" zone continues around the corner onto San Miguel, parkers assume the curve is allowed for parking and often violate the zone. Red curb would also work around the curb, but as discussed before, there is no actual curb, and painting the existing asphalt berm was not desirable;
- 5. Extend the "No Stopping" during school pick-up and drop-off hours** on San Miguel all the way from Hermosa to Nithsdale on the east side of the street. This would keep parents from parking on the east side and having the children cross through the traffic and also allow room for two-way traffic as well as the drop-off lane on the west side of the street;
- 6. Move the marked north/south crosswalk from the west side to the east side** of the Nithsdale / San Miguel intersection to encourage pedestrians on San Miguel, north of Nithsdale to walk on the east side of the street for improved safety and traffic visibility.

710 North Tunnel Project

Metro and Caltrans have not officially chosen a project to close the gap on the 710 North. It is believed they may wait until after the November 8th election. California may add ballot measures for sales and other tax increases for transportation projects throughout Los Angeles County and the state. SRNA's Fall 2015 newsletter discussed the anticipated measures that may qualify for the November 8th election.

See: <http://srnapasadena.org/wp-content/uploads/2015/09/SRNA-Fall-Newsletter-2015.pdf>

Proponents of the tunnel project continue to insist that the tunnel will increase the flow of traffic and ease traffic on other freeways. However, most of the time as more freeway lanes are added, or more freeways are built it just means more capacity for more cars and diesel trucks. The direct line from the Los Angeles Ports for trucking to the high desert corridor will only increase - not decrease - traffic. SRNA believes that is 20th Century transportation planning. We need modernity to address our transportation challenges and that thinking does not include a \$5-15 billion dollar tunnel! There are better and more cost-effective 21st Century solutions available.

As noted last year, The San Gabriel Valley Council of Governments (SGVCOG) DELETED the tunnel project from their priority funding list. The Council stated that the project has so much opposition and one member publicly noted the project is deeply flawed.

Massive tunnel projects such as Seattle's Bertha and the Big Dig in Boston continue to have major problems and cost over-runs. The Big Dig in Boston completed some 14 years ago is now facing \$54 million to replace the lighting due to corrosion and defects in the design. That tunnel originally cost over \$14 billion dollars. Seattle's Bertha tunnel was suspended for cause for months and only recently allowed to proceed conditionally. The proposed Sepulveda Pass tunnel has wild estimates ranging from as *little* (pun intended) as \$7 billion to as much as \$15 Billion. It appears Metro is not sure what that tunnel will cost.

www.bostonglobe.com/metro/2012/04/04/big-dig-tunnels-need-light-replacement-mass-officials-say/6uwyOrP6S6Xuc8IxMwnHPJ/story.html

http://www.masstransitmag.com/press_release/12106608/sgvcog-deletes-sr-710-tunnel-from-priority-funding-list

JOIN OR RENEW YOUR MEMBERSHIP WITH SRNA

MEMBERSHIP LEVELS:

Member	\$	20.00
Household	\$	35.00
Sustaining	\$	100.00
Patron	\$	250.00
Benefactor	\$	500.00

You may send your check by mail to:

**San Rafael Neighborhoods Association
PO Box 92617
Pasadena, CA 91109**

[SRNA 2016 Member Form](#)

OR

Join us at our website at
www.srnipasadena.org and click the tab "Join Us"

Debit and credit cards accepted.

Sign up for our News and Notices:
<http://srnipasadena.org/join-us/>



The mission of the San Rafael Neighborhoods Association is to enhance and maintain the character and quality of all San Rafael neighborhoods through advocacy and an activated community.

SRNA is a California exempt non-profit 501 c 4 corporation and registered with the City of Pasadena/Neighborhood Connections office.

Membership Dues/Donations are Not Tax Deductible.

